



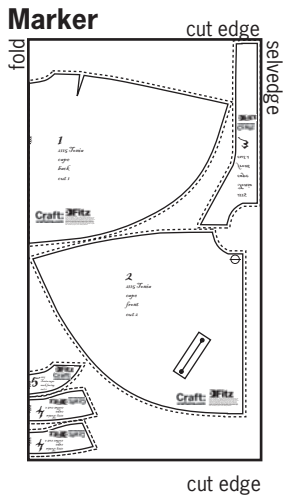
Craft:
craftzine.com

Fitz
For making individuals. www.fitzpatterns.com



TONIA CAPE

PERFECT FOR SPRING,
AUTUMN, FALL OR
WHATEVER YOU CALL
THE IN-BETWEENSONS.

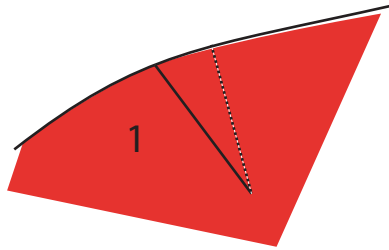


1. Check your pattern has been printed to scale by measuring the test box is 10cm x 10cm (3 6/8"). Note that a seam allowance of 10mm (1cm or 3/8") has been allowed. In this pattern, the dotted line is the cutting line and the unbroken line is the stitching line.

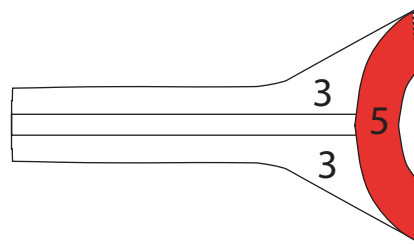
2. Cut out pattern pieces from paper sheet.

3. Layout and pin to fabric following the marker and ensuring pattern pieces are aligned with the grain. This is important and should stop things from twisting when you wear them. Cut out fabric following dotted line.

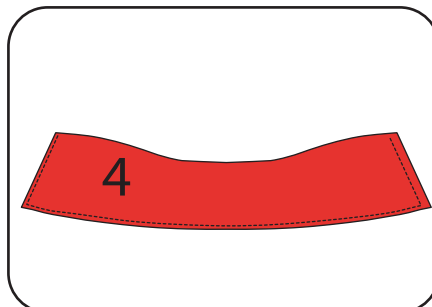
4. Stitch darts on cape back (1) and press out.



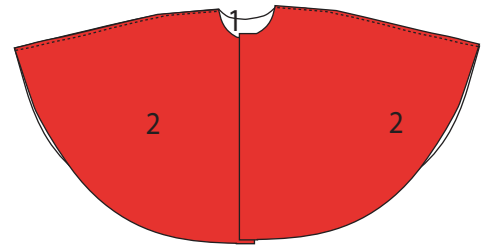
5. Stitch facings (3 & 5) together. Press out. Finish facing edges.



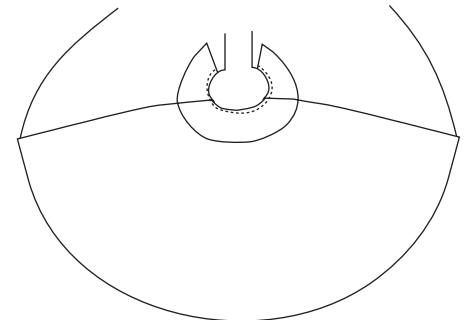
6. Iron on interfacing to one wrong side of collar (4). Put right sides of collars pieces together and stitch. Press out.



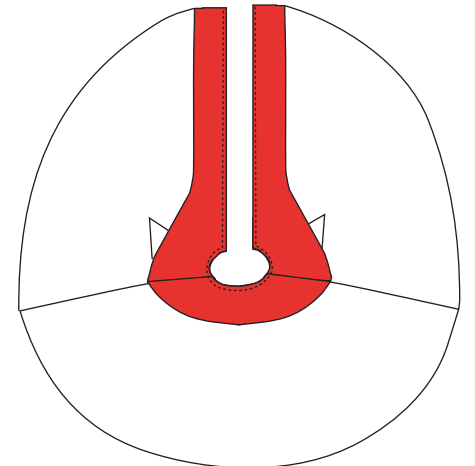
7. Stitch front pieces (2) to back (1). Press out.



7. Stitch collar (4) to right side of cape.



8. Stitch facings (3 & 5) to cape. Press out.

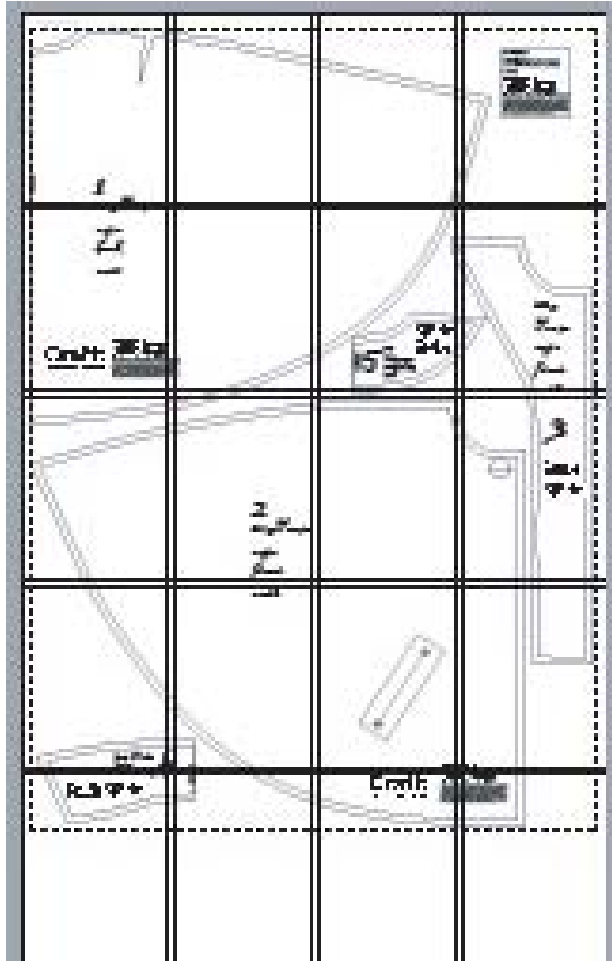


9. Hem cape. Press hem.

Craft:
craftzine.com

Fitz
For making individuals. www.fitzpatterns.com

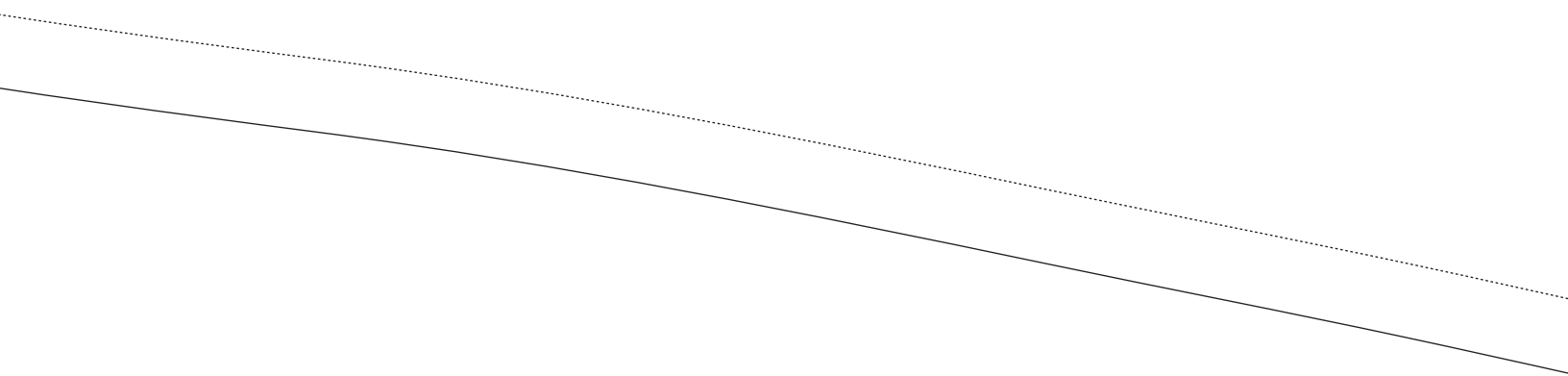
© 2006 - Fitz patterns. All rights reserved. Designs and Patterns by Fitz Patterns are protected by Australian Copyright Laws and International Treaties. No part of this pattern/design and or its written content may be reproduced or transmitted in any form or by any means, electronic or mechanical, including photocopying, recording, or by any information storage and retrieval system without the express written consent of Fitz Patterns. Fitz Patterns grants users permission to print one hard copy for personal use only, for Fitz Patterns presents this information in good faith. No warranty is given, nor are results guaranteed.



place on fold

1

2115 Tonia



ATTN: PRINTER

PLEASE NOTE: to ensure pattern is to scale this box should measure 100mm x 100mm.



© 2006 - Fitz patterns. All rights reserved. Designs and Patterns by Fitz Patterns are protected by Australian Copyright Laws and International Treaties. No part of this pattern/design and or its written content may be reproduced or transmitted in any form or by any means, electronic or mechanical, including photocopying, recording, or by any information storage and retrieval system without the express written consent of Fitz Patterns. Fitz Patterns grants users permission to print one hard copy for personal use only. for Fitz Patterns presents this information in good faith. No warranty is given, nor are results guaranteed.

2115 Sonia

cape

back

cut 1

Craft:
craftzine.com

Fitz
For making individuals. www.fitzpatterns.com

© 2006 - Fitz patterns. All rights reserved. Designs and Patterns by Fitz Patterns are protected by Australian Copyright Laws and International Copyright Treaties. No part of this pattern/design and or its written content may be reproduced or transmitted in any form or by any means, electronic, mechanical, including photocopying, recording, or by any information storage and retrieval system without the express written consent of Fitz Patterns. Fitz Patterns grants users permission to print one hard copy for personal use only. Fitz Patterns presents this information in good faith. No warranty is given, nor are results guaranteed.

Patterns by Fitz
International
Content may be
electronic or
information
Consent of Fitz
the hard copy
ation in good

Fitz
For making individuals. www.fitzpatterns.com

Craft:
craftzine.com

place on fold
5 2115
*Tonia cape
neck facing
cut 2*



2115

Tonia

cape

front

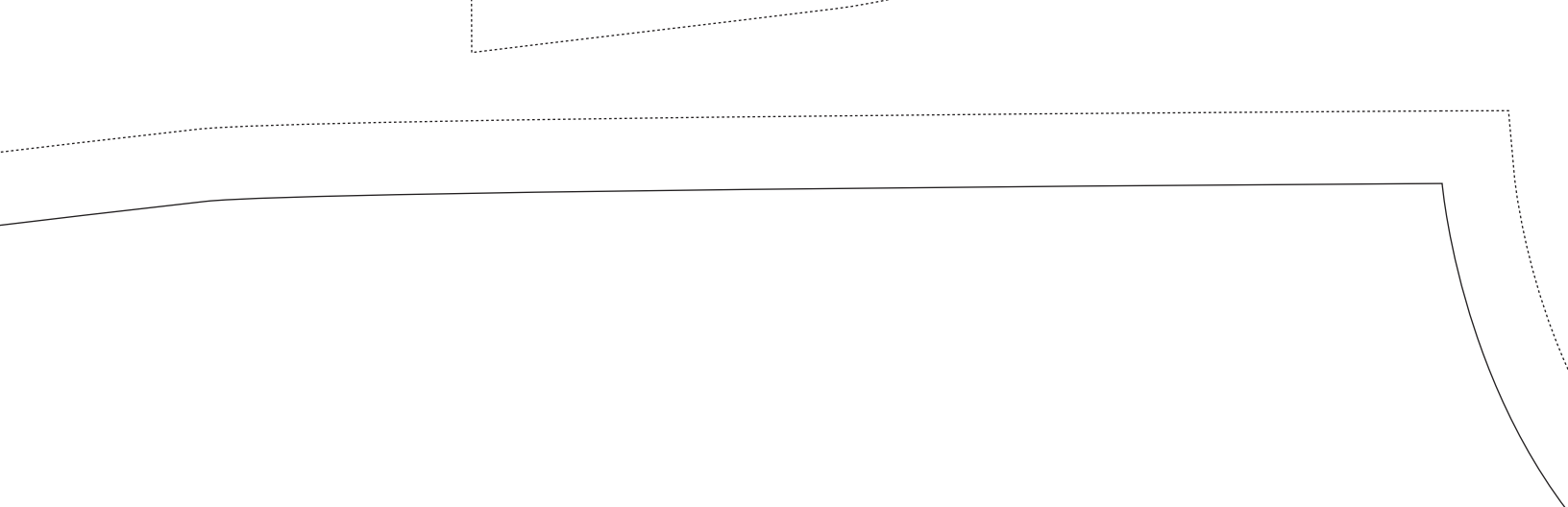
cut 2

2

2115 *Tonia*

cape

front

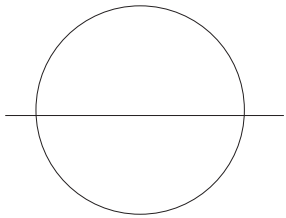


Cut 2



Craft:
craftzine.com

Fitz
For making individuals. www.fitzpatterns.com

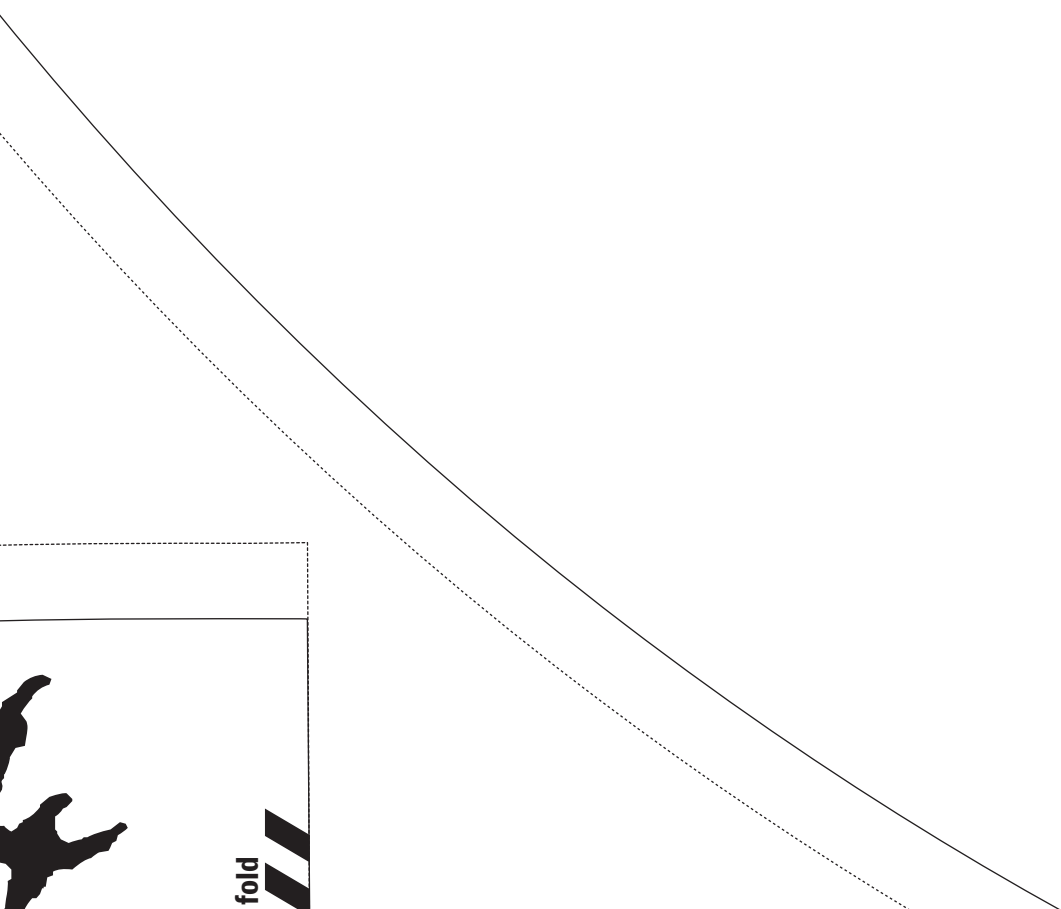


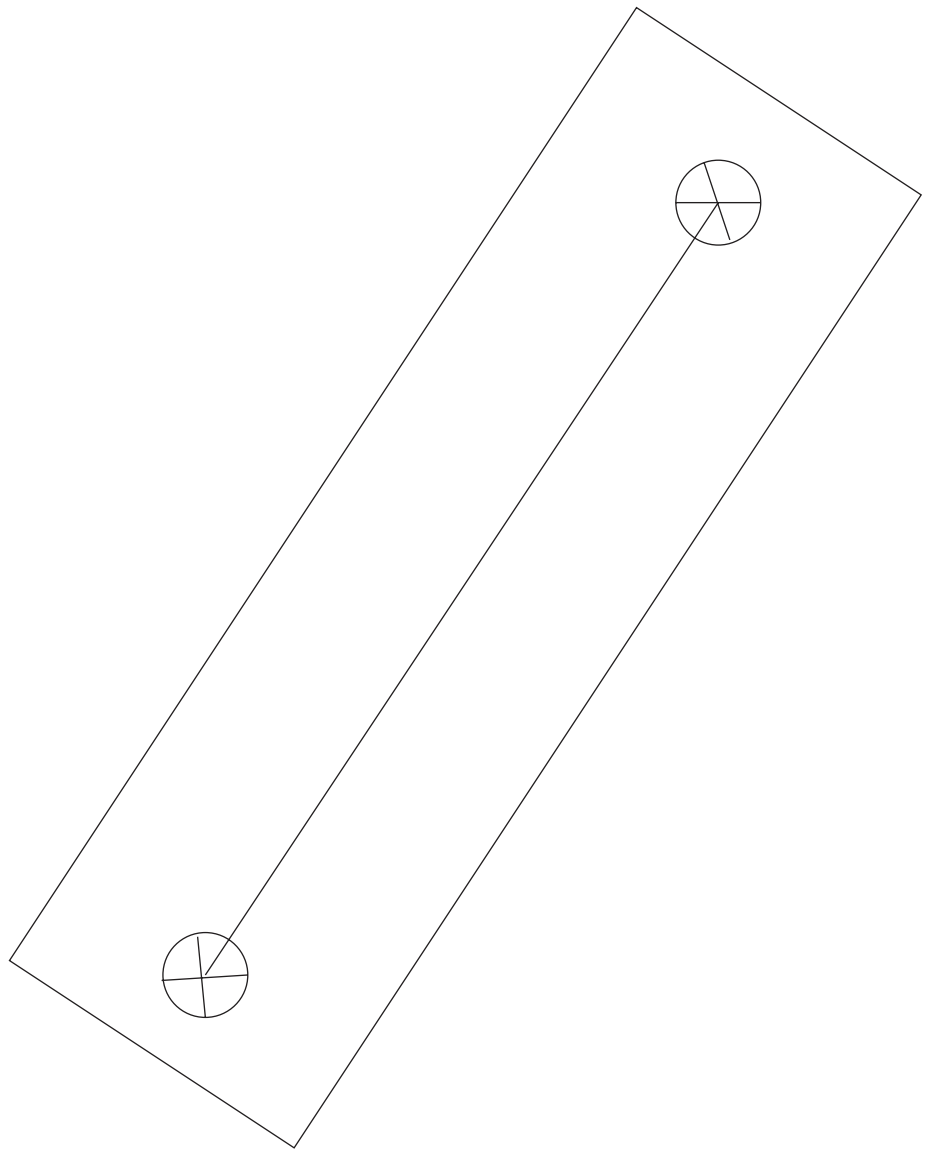
2115 Tonia

cape



cut 2





*cape
collar cut 2*



Craft:
craftzine.com

Fitz
For making individuals. www.fitzpatterns.com

place on fold

Craft: craftzine.com



For making indiv

© 2006 - Fitz patterns
Patterns are protecte
Treaties. No part of t
reproduced or transm
mechanical, including
storage and retrieval
Patterns. Fitz Pattern
for personal use only.
faith. No warranty is

patterns. All rights reserved. Designs and Patterns by Fitz
protected by Australian Copyright Laws and International
part of this pattern/design and or its written content may be
transmitted in any form or by any means, electronic or
including photocopying, recording, or by any information
retrieval system without the express written consent of Fitz
Patterns grants users permission to print one hard copy
use only. for Fitz Patterns presents this information in good
warranty is given, nor are results guaranteed.