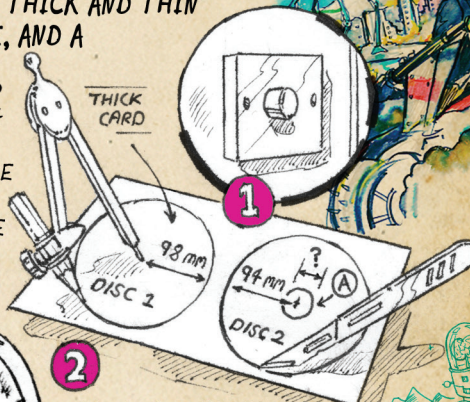


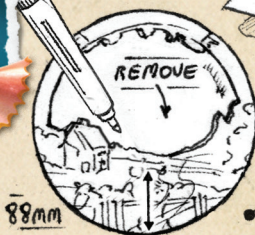
What I made

TURN A DIMMER SWITCH INTO A COOL DAY AND NIGHT DIAL. YOU'LL NEED A ROTARY DIMMER SWITCH, THICK AND THIN CARDSTOCK, GLUE, AND A CRAFT KNIFE.

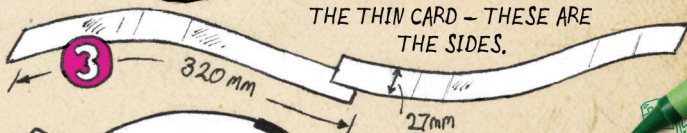
START BY CUTTING 2 DISCS FROM THE THICK CARD, ENSURE HOLE (A) FITS TIGHTLY OVER THE DIMMER SWITCH KNOB.



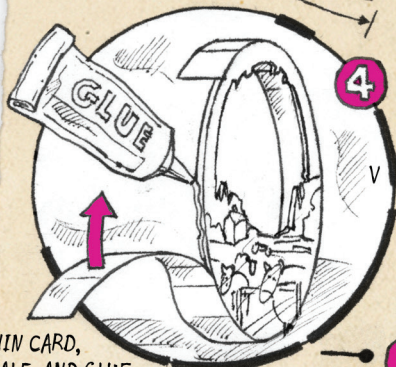
1 DRAW AN OUTDOOR SCENE ON ONE OF THE DISCS, REMOVE THE SKY AREA USING A CRAFT KNIFE.



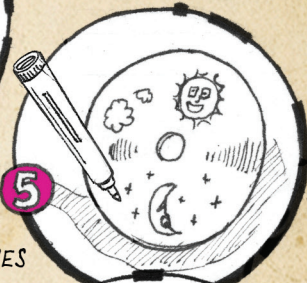
2 NOW CUT 2 LONG STRIPS FROM THE THIN CARD - THESE ARE THE SIDES.



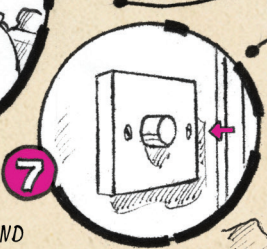
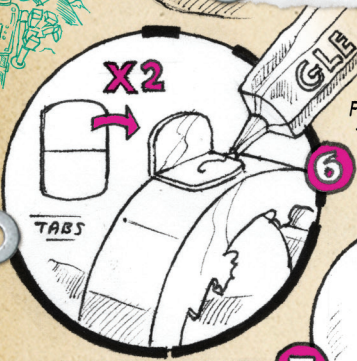
4 GLUE ALONG THE EDGE OF DISC 1 AND WRAP THE THIN STRIPS AROUND, OVERLAPPING THEM AND GLUING THE ENDS.



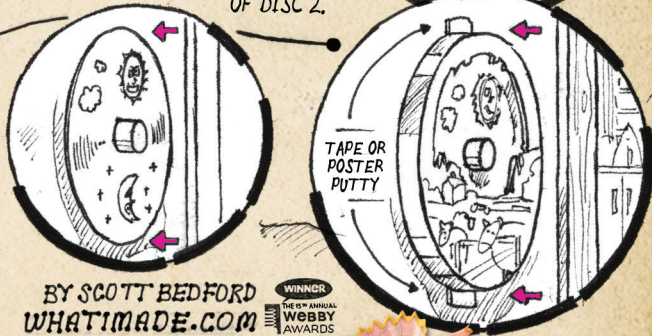
5 DRAW A SUN AND MOON SKY SCENE ON OPPOSITE HALVES OF DISC 2.



6 CUT OUT 2 TABS FROM THIN CARD, FOLD THEM IN HALF, AND GLUE TO THE TOP AND BOTTOM OF DISC 1.



8 TAPE OR POSTER PUTTY



TURN THE LIGHT ON AND PUSH DISC 2 ONTO THE KNOB (WITH THE SUN AT THE TOP), PLACE DISC 1 ON TOP, ATTACHING THE TABS TO THE WALL WITH TAPE.

BY SCOTT BEDFORD
WHATIMADE.COM

