



PORTFOLIO

PORTFOLIO

Finished Dimensions: $9\frac{1}{2}" \times 7\frac{1}{2}"$

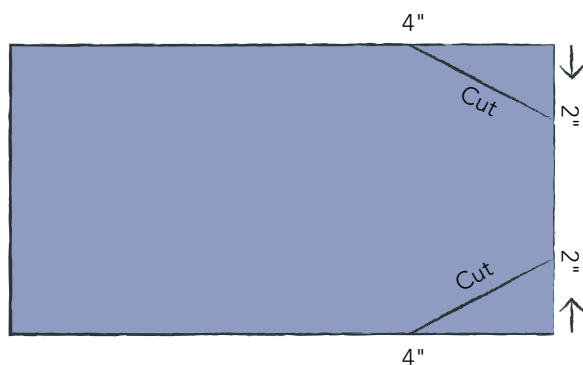
This fold-over fabric envelope holds and covers your favorite tools; the dimensions given here are perfect for a journal and pens. (I've also provided suggestions for how to create a larger size customized for a laptop or tablet.) This design plays off of two contrasting colors of linen and uses low tech "soft-ware" (a handmade strap) for the closure. The back side is a perfect canvas for a stencil. This small portfolio has its print on the inside flap for a special glimpse every time it's opened.

Prepare the Envelope

1 Make the strap from the 3" x 11" piece of linen. Fold linen in half lengthwise and press with a hot iron. Open and fold each side just to the crease. Fold in half again. The crease is on one side and the folded edges are on the other. Sew a straight stitch along the edge of each side. Set aside.

2 Place all three rectangular layers on top of one another in this order: batting, linen, linen. Linen does not have a right side, unless it's a print. If you are working with a print, make sure that the two pieces of linen are right side to right side on top of the batting.

3 Cut off two top corners to create an envelope V-shape.

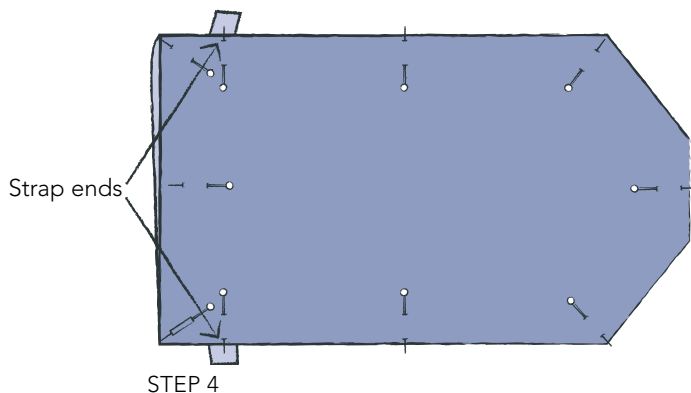


STEP 3

SUPPLIES

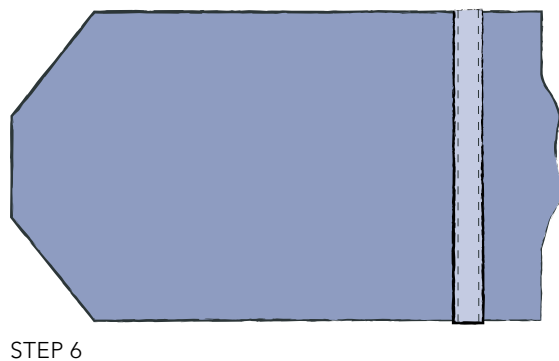
- 2 10" x 20" linen rectangles in contrasting colors
- 10" x 20" piece batting
- 3" x 11" linen strip for the strap to match the interior color
- Coordinating thread
- Printed stencil pattern
- Fabric paint and brush
- Craft knife and cutting mat

4 Insert the strap between the two layers of linen 1½" from the bottom. Pin every layer together, making certain that both sides of the strap are placed evenly. Pin around the perimeter of the portfolio.



5 Using a ¼" seam allowance, sew around the perimeter leaving 4" open in the bottom center for turning. This opening is opposite to the envelope side. Clip each corner. Clip off excess of any of the strap edges to make them flush with the rest of the portfolio.

6 Turn the piece right side out and gently poke out the corners using the eraser end of a pencil.

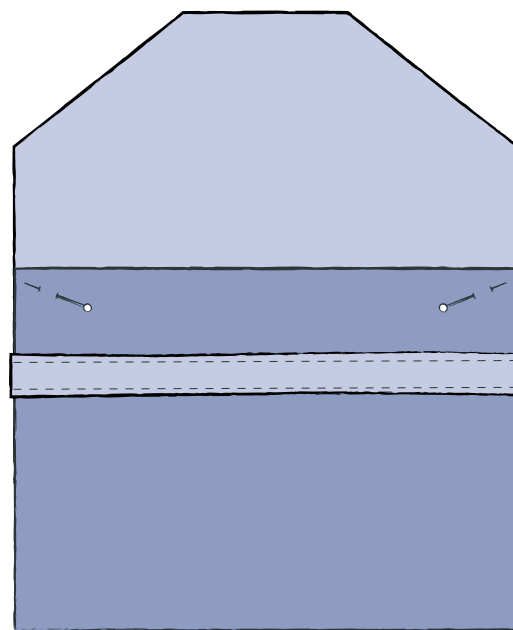


7 Tuck in the open side and pin it closed. Press the whole piece.

8 Edge stitch along the entire bottom making sure to catch the sides of the opening in the seam allowance.

Assemble the Envelope

1 Fold up the bottom 6½" inches. Because the strap can still slip to either side, make sure it is on the chosen outside, not the interior, and then pin in place.



STEP 1

2 Starting on a bottom corner, edge stitch up and around the envelope, excluding the bottom folded side.

3 If you'd like to embellish the portfolio, select a stencil, decide where you want to place it, and follow the instructions in Chapter 2 for printing. Slip in your tool of choice and you're off!



Formula for Creating a Larger Portfolio

If you'd like to make a larger portfolio to cover a specific notebook, laptop, or tablet then use the following suggestions for figuring out the measurements of your supplies and modify the project steps as specified. The example used is a laptop.

1 Find the length of the envelope rectangle by wrapping a measuring tape around a closed laptop widthwise. Jot down that number. Next, figure out how many inches are needed for the fold-over flap by measuring $\frac{3}{4}$ of the way across the top widthwise. Add those inches to your first measurement. This number is the length of the rectangle.

For example: $19\frac{1}{2}" + 6" = 25\frac{1}{2}"$

2 Find the width of the rectangle by measuring the height of the computer and doubling it. Add that number to the length of the computer plus 1". For example: $\frac{3}{4}" \times 2 + 13" + 1" = 15\frac{1}{2}"$

Cut three rectangles $25\frac{1}{2}" \times 15\frac{1}{2}"$.

The strap remains the same width regardless of the size of the portfolio. Lengthen it to be as long as the width of the rectangle + 1".

3 Modify Step 3 of the "Prepare the Envelope" section by cutting off the corners to form an envelope V shape where you see fit for your new size.

4 Modify Step 4 of the "Prepare the Envelope" section by pinning the strap 2" from the bottom. Keep the placement the same as the original for smaller tablets.

NOTE: These modifications are recommendations, but customization will involve using your own logic, as well.