

## Simple Sewing For Baby Snuggler Pattern

by Lotta Jansdotter



CHRONICLE BOOKS

[chroniclebooks.com](http://chroniclebooks.com)

# Snuggler

One of the first things a new parent will learn is how to swaddle the little one. It's a great comforting technique that really works. Our son, August, would always calm down when we rolled him up like a little burrito.

I received a super cozy bundler as a gift, and I simply loved it. I could wrap August up in a jiffy and we would all be much happier. I've made a few modifications to this snuggler design, but it's still very similiar to the one I had originally received. It makes a great present at a baby shower.

## **Finished size:**

20 in/51 cm long x 11 in/28 cm wide, plus the wraps

## **Fabric:**

1 yard (44 in wide) /90 cm (114 cm wide) medium weight cotton

1 yard (44 in wide) /90 cm (114 cm wide) soft fabric, such as microfleece

## **Supplies:**

Pattern from the front pocket of this book

Scissors

Straight pins

Fadeout marker

½ yard (1 in wide) /46 cm (2.5 cm wide) Velcro

Iron

Thread

Point turner

Hand-sewing needle

## **Notes:**

All seams are ½ in/12 mm unless otherwise noted. The seam allowance is included in the cutting instructions and pattern. Preshrink your fabric by washing, drying, and pressing it before you start.

## Step 1: Cut out the pieces from the fabric

**A:** Cut out the pattern pieces provided at the front of this book.

**B:** Fold the cotton fabric Right sides together, selvages aligned. Pin the pattern pieces to the fabric, aligning the fold marks with the fold of the fabric. Cut out each piece following the solid cutting lines on the pattern. Before you remove the pattern, transfer the darts and other placement marks to the Wrong side of the fabric on both sides of the fold on each piece.

**C:** Repeat step B with the fleece.

**D:** Using your fadeout marker on the Right side of the cotton fabric, place the pattern on the large fabric piece and transfer the Velcro placement marks that are labeled "A". Then, on the Right side of the large fleece piece, transfer the Velcro placement marks that are labeled "B".

## Step 2: Sew the snuggler

**A:** Starting with the darts, on the large cotton piece, with the Right sides together, fold over the fabric so that a fold runs down the center of the dart triangle and both straight marked lines match up. Pin. Repeat for all the darts on both pieces of fabric. Machine-stitch from the raw edge of the fabric to the end of the darts, backstitching at the beginning and end. You should sew all the way to the fold at dart's end. Trim the seam allowances to  $\frac{1}{4}$  in/6 mm, clipping open the fold to lay flat, and press open. Repeat on the fleece pieces. [figure 10]

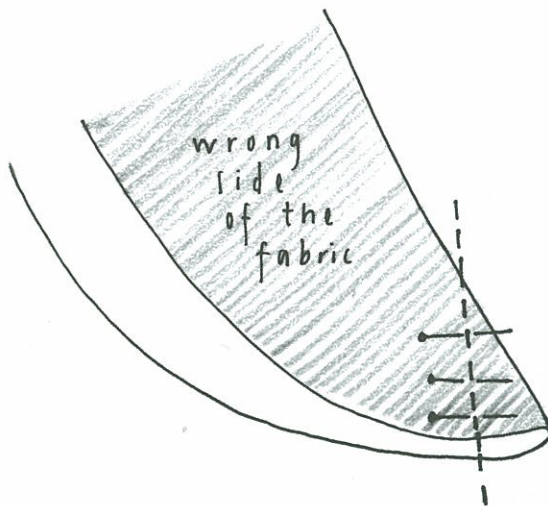


Figure 10

**B:** With the cotton piece's Right sides together, place the bottom of the snuggler on the larger top piece. Pin. Make sure it's aligned perfectly with the placement marks around the bottom curve and edges. Repeat with the fleece pieces. Machine-stitch from the placement mark on one side around the curve to the mark on the other side, backstitching at the beginning and end. Repeat with the fleece pieces. Trim the seam allowance to  $\frac{1}{4}$  in/6 mm up to the placement marks, and clip around the curved edges (be careful not to cut through the seam). Press the seams open. [figure 11]

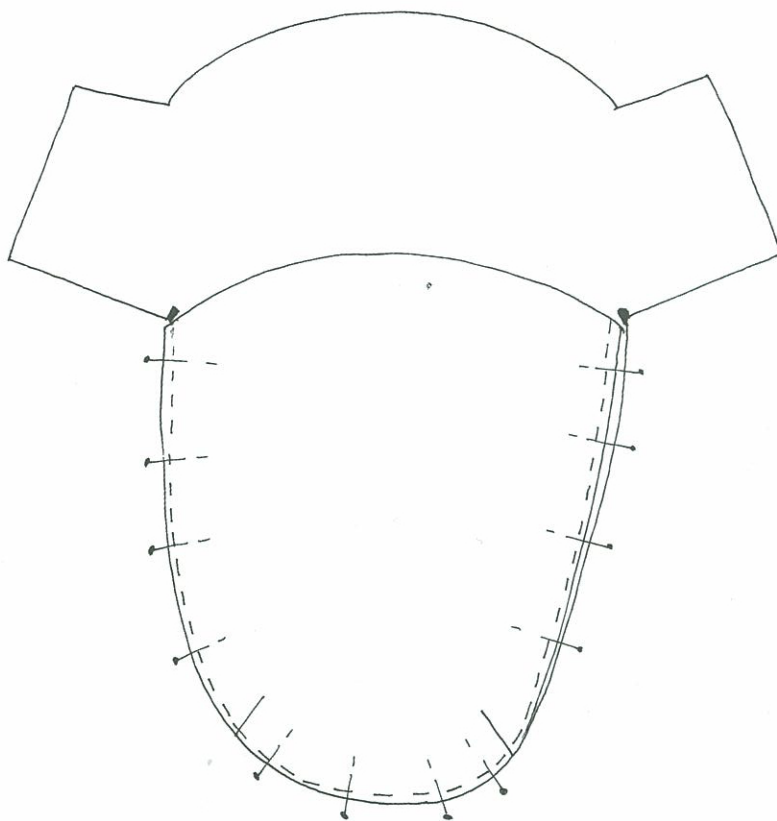


Figure 11



**C:** Turn the cotton layer Right side out, and leave the fleece layer Wrong side out. Insert the cotton layer inside the fleece layer, so that the Right sides of the layers are facing each other, tucking the pouch part down inside the snuggler and aligning the flaps and edges. Pin around the back, flaps, and top of the pouch. Leave a 3 in/8 cm opening under one of the flaps. Stitch along the pinned edge, being sure to leave the opening unstitched and backstitching at the beginning and end. Ease your way around the corners where the pouch meets the top of the snuggler. Trim the seam allowance to  $\frac{1}{4}$  in/6 mm, except at the 3 in/8 cm opening on one of the flaps. Clip the curved edges, being careful not to clip through the seam. Clip the corners at a 45-degree angle. Turn the snuggler Right side out through the opening, smoothing the curved parts with your fingers and using your point turner to poke out the corners. Tuck the fleece pouch layer inside the cotton layer. The fleece should be the inside of the snuggler.

**D:** Fold the  $\frac{1}{2}$  in/12 mm seam allowance on both sides of the opening inside. Press and pin. Slipstitch the opening closed by hand.

**E:** On the cotton layer, pin the prickly side of the Velcro pieces, aligning with the placement marks. Machine-stitch around each side of the Velcro, backstitching at the beginning and end.

**F:** On the fleece layer, pin the soft side of the Velcro pieces, aligning with the placement marks. Machine-stitch around each side of the Velcro, backstitching at the beginning and end.

