

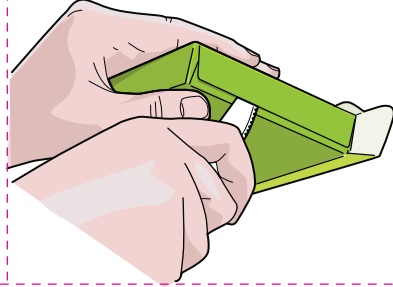
Some teenage friends of mine were suffering from the purse tyranny of their middle school when we came across these Japanese candy boxes. A glue gun and some fake fur later, we had made these clever recycled purses.

You will need: Japanese candy box, butter knife, clear contact paper or access to a laminating machine, scissors, pencil, hot glue gun, hot glue, Velcro closure, decorative trim, and fake fur (or other material) for lining and strap



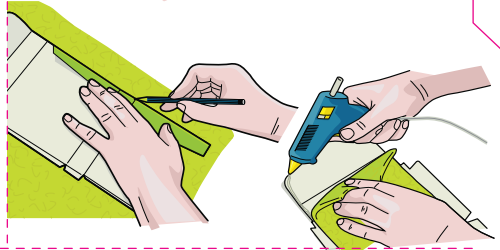
1. Deconstruct.

Carefully open the package using the butter knife to keep the flaps from tearing. Lay the package flat and press the design side onto clear contact paper. Trim. *For a more durable purse, have it professionally laminated. Kinko's charges \$3 per square foot.*



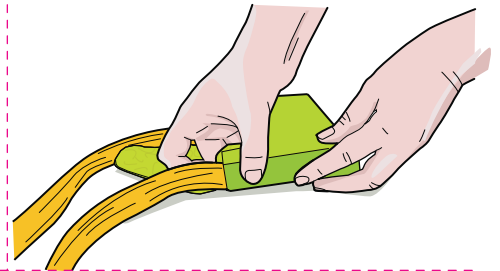
2. Add lining.

Fold the flaps up and trace the center shape onto the lining. Cut the lining to cover the center, and glue down on the inside.



3. Attach handle.

Attach the handle to the ugly side of the cardboard.



4. Reconstruct.

Reconstruct the box and re-glue on the original seams. Attach Velcro closure and trim.

