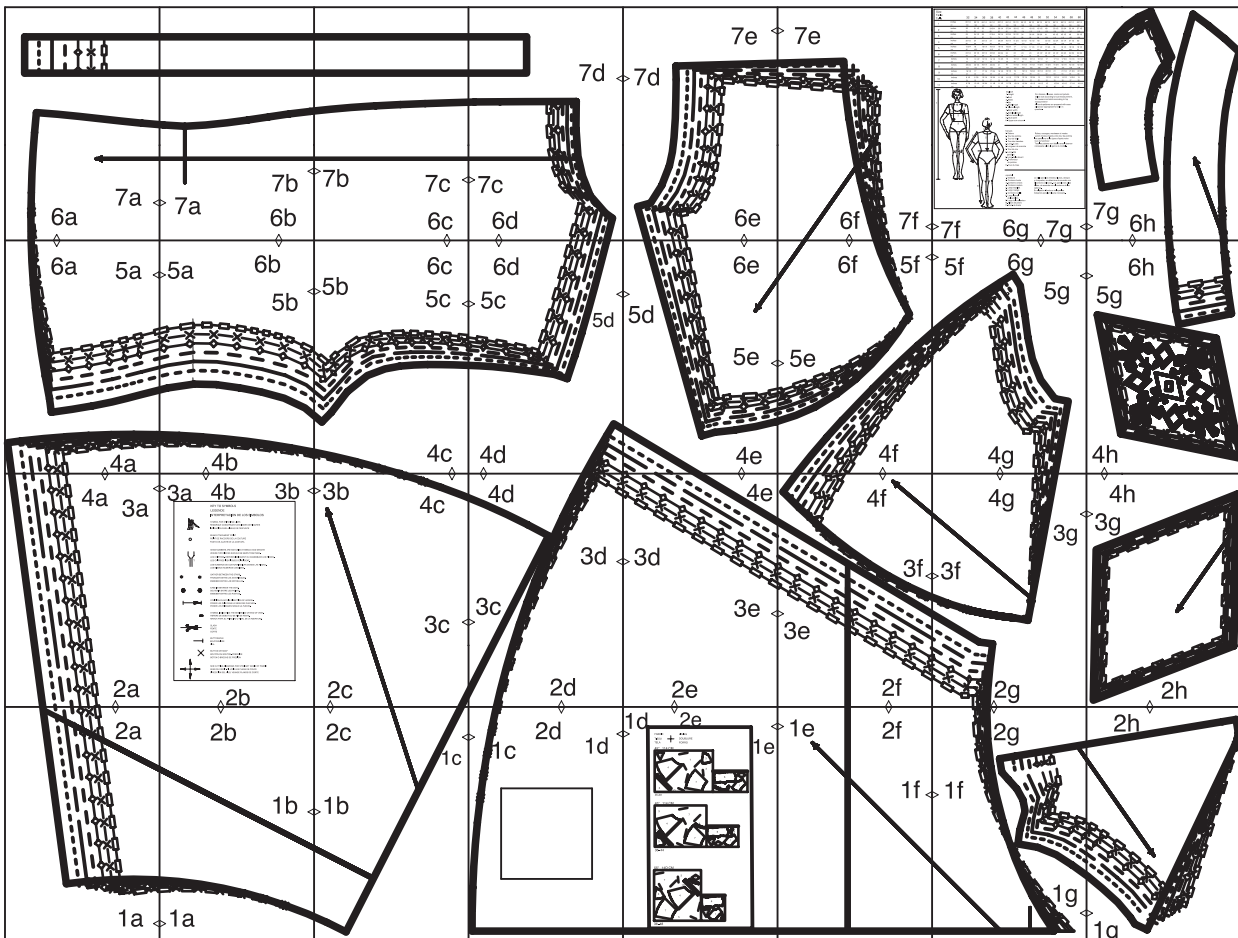


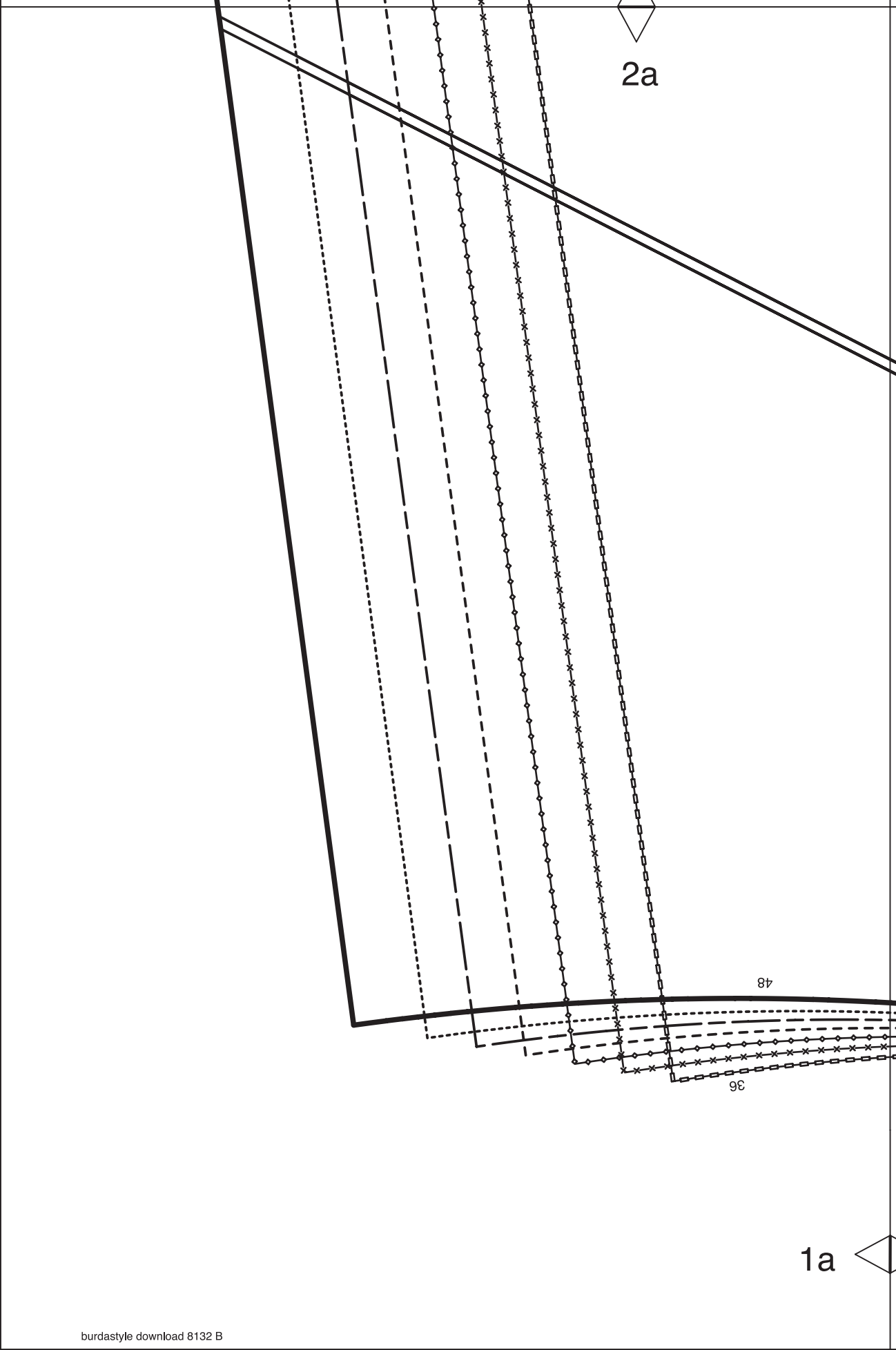
Celeste Dress



burdastyle download 8132 B

layout drawing





2a

48

36

1a

2b

Burda STYLE

8132

www.burdastyle.com

(1,5cm)

5/8"

SEAM ALLOWANCE INCLUDED
AVEC VALEUR DE COUTURE
CON MARGEN DE COSTURA

FORRO
DOUBLURE

+

LINING



2 x

TELA

FABRIC

FALDA POST.

DOS DE JUPE
BACK SKIRT PANEL



1b

LENGTHEN OR SHORTEN HERE
RALLONGER OU RACCOURCIR ICI
ALARGAR O ACORTAR AQUI

1a

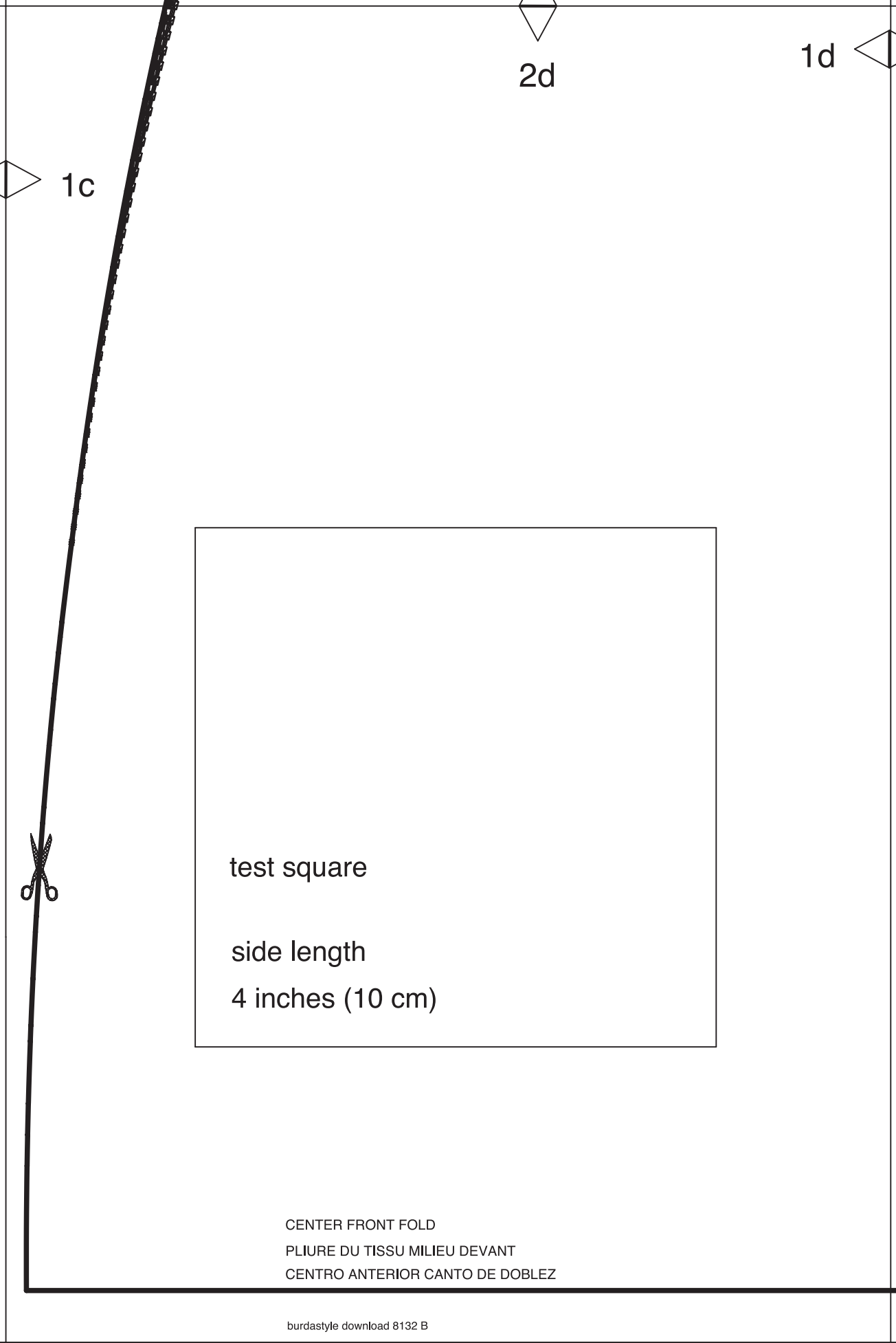
2c

1c

1b

36

ZIPPER
& FERMETURE A GLISSIERE
CREMALLERA
0.9



1c

2d

1d

test square

side length

4 inches (10 cm)

CENTER FRONT FOLD
PLIURE DU TISSU MILIEU DEVANT
CENTRO ANTERIOR CANTO DE DOBLEZ

1d

2e

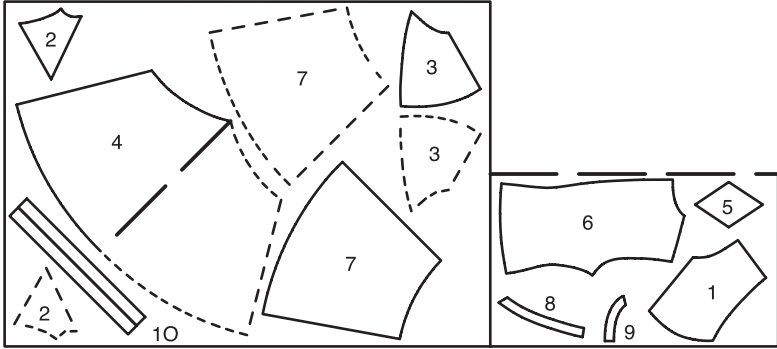
1e

FABRIC
TISSU
TELA



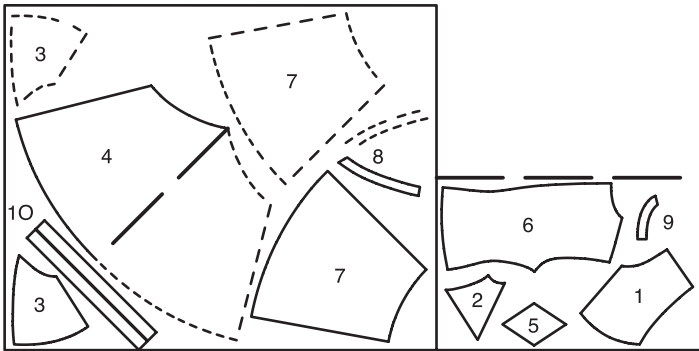
LINING
DOUBLURE
FORRO

45" 114 CM



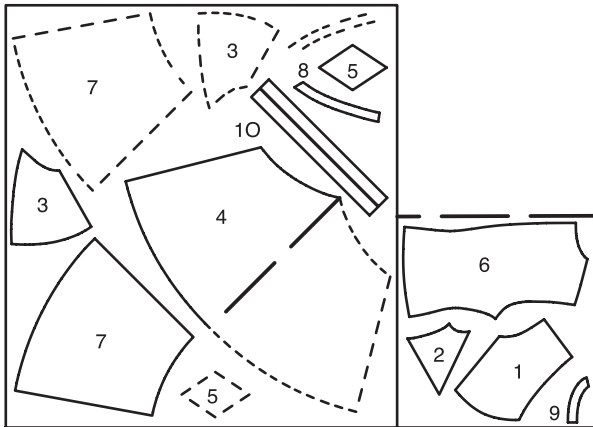
46+48

45" 114 CM



36-44

55" 140 CM



36-48

FINISHED HIP TOUR DE HANCHES MEASUREMENTS CADERA

SIZE	36	43"	109cm
	38	44	113cm
	40	46"	117cm
	42	47	121cm
	44	49	125cm
	46	50	129cm
	48	53	135cm

1f

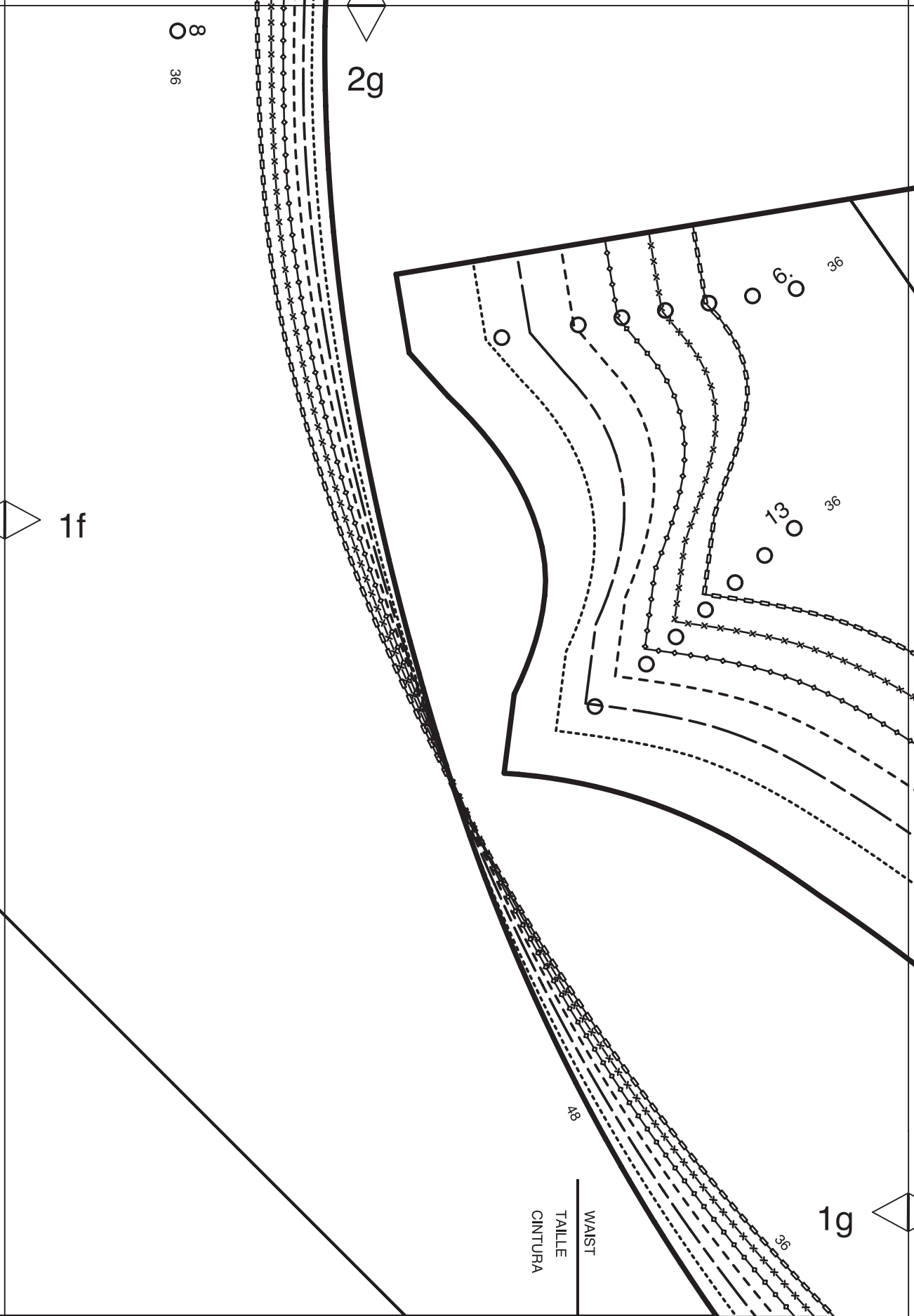
2f

STRAIGHT GRAIN
DROIT FIL
SENTIDO HILO

LENGTHEN OR SHORTEN HERE
RALLONGER OU RACCOURCIR ICI
ALARGAR O ACORTAR AQUI

1e





2h

2

UPPER SIDE FRONT
COTE DEVANT SUPERIEUR
DELANTERO LATERAL SUPERIOR

FABRIC

TISSU

TELA

+

LINING

DOUBLURE

5/8"
(1.5cm)

SEAM ALLOWANCE INCLUDED
AVEC VALEUR DE COUTURE
CON MARGEN DE COSTURA



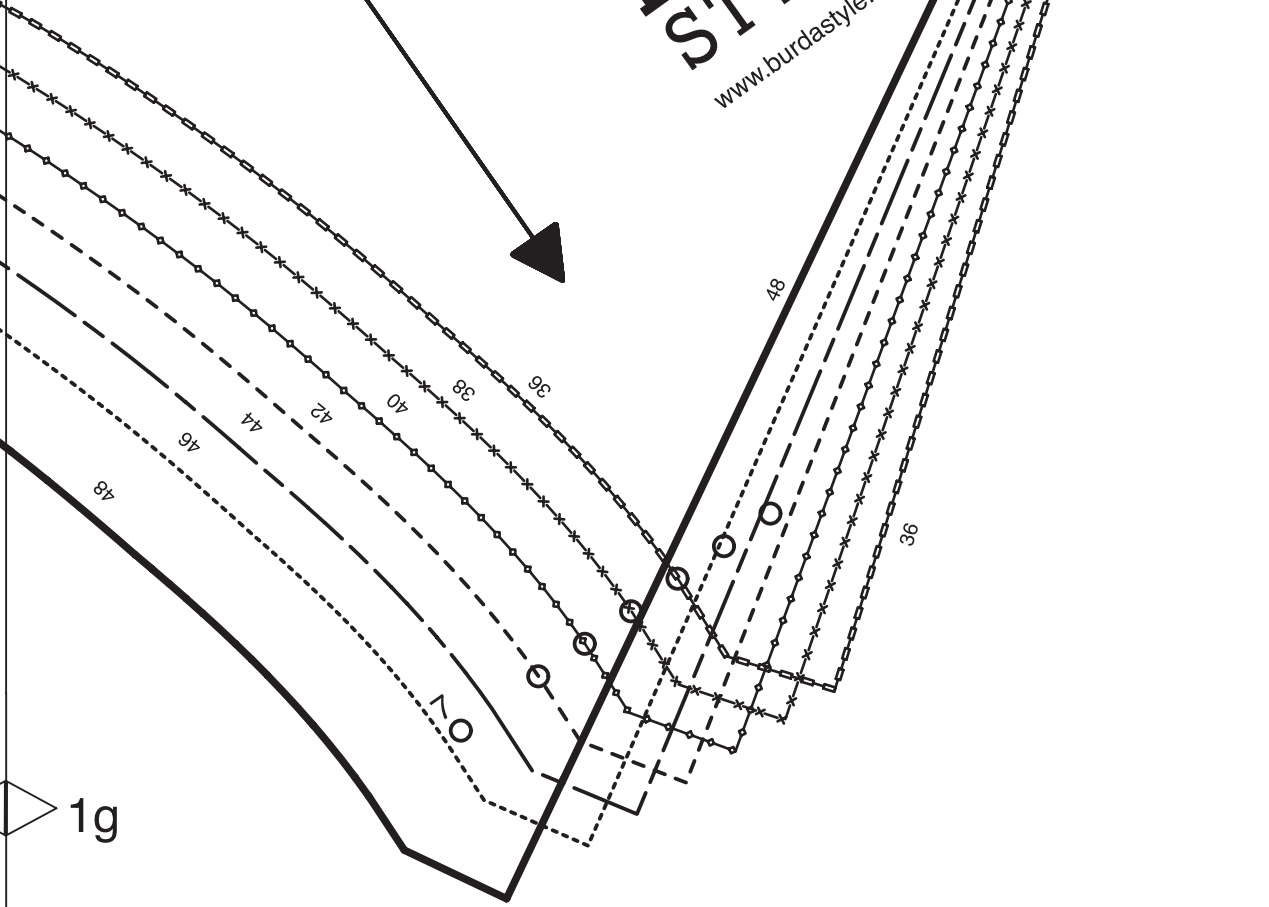
2 x

8132

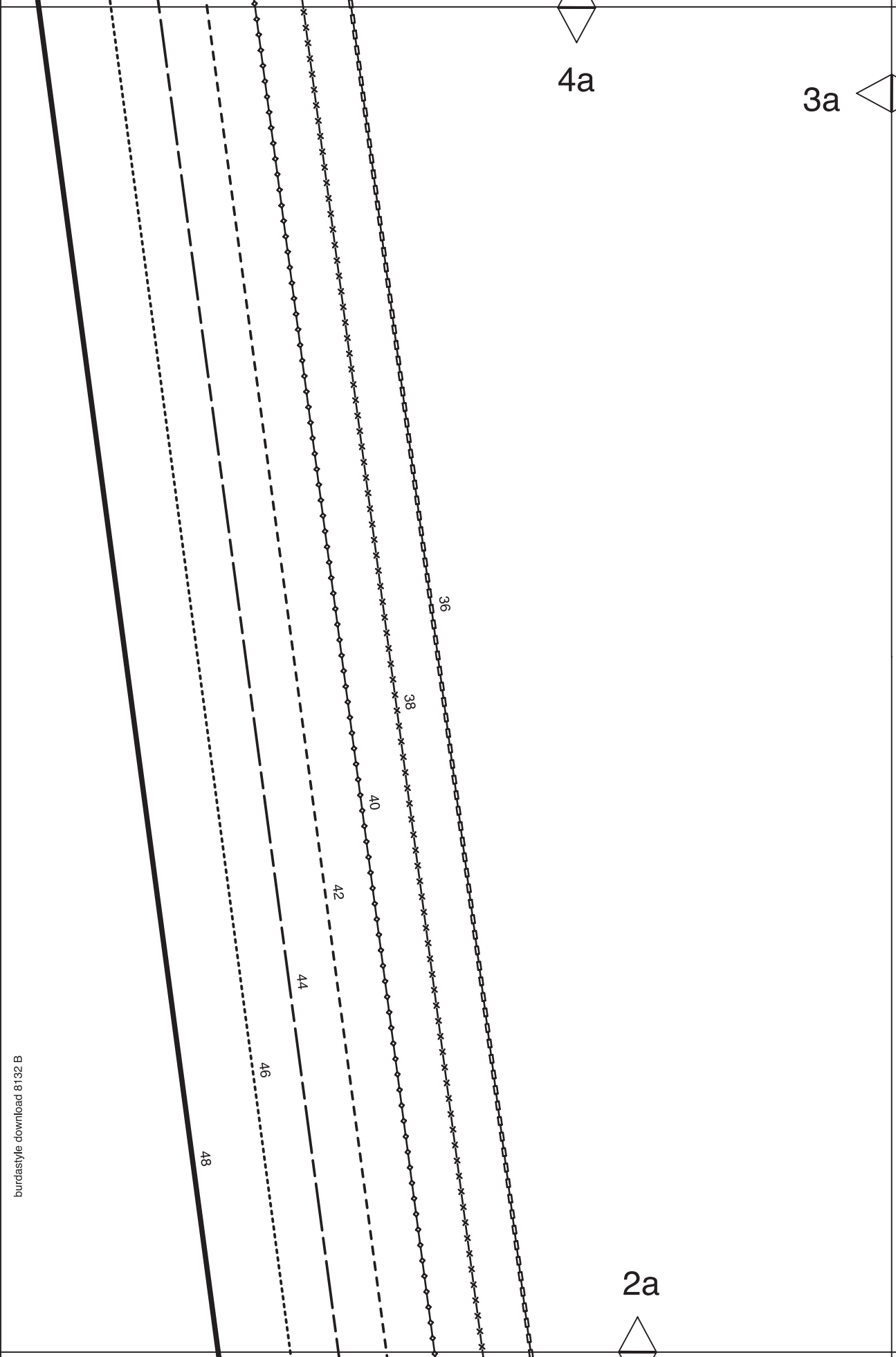
**Burda
STYLE**

www.burdastyle.com

STRAIGHT GRAIN
DROIT FIL
SENTIDO HILO



1g



4a

3a

2a

48

46

44

42

40

38

36

3a

4b

3b

KEY TO SYMBOLS
 LEGENDE
 INTERPRETACION DE LOS SIMBOLOS



SYMBOL FOR STITCHING LINES
 REMARQUE CONCERNANT LES LIGNES DE PIQUES
 INDICACION PARA LINEAS DE PESPUNTE



SEAM ATTACHMENT POINT
 POINT DE RACCORD DE LA COUTURE
 PUNTO DE AJUSTE DE LA COSTURA



SEAM NUMBERS ARE MATCHING SYMBOLS AND DENOTE
 WHERE TWO PIECES SHOULD BE SEWN TOGETHER.
 LES CHIFFRES—REPERES INDIQUENT OU ASSEMBLER LES PIECES.
 LES CHIFFRES IDENTIQUES COINCIDENT.
 LOS NUMEROS DE COSTURA INDICAN DONDE LAS PIEZAS.
 LOS MISMOS NUMEROS COINCIDEN.



GATHER BETWEEN THE STARS.
 FRONCER ENTRE LES ASTERISQUES.
 EMBEBER ENTRE LAS ESTRELLAS.



EASE IN BETWEEN THE DOTS.
 SOUTENIR ENTRE LES POINTS.
 EMBEBER ENTRE LOS PUNTOS.



POSITION PLEATS IN DIRECTION OF ARROW.
 POSER LES PLIS DANS LE SENS DES FLECHES.
 PONER LOS PLIEQUES SEGUN LA FLECHA.



SYMBOL INDICATING THE BEGINNING OR END OF VENT.
 REPERE DE DEBUT OU DE FIN DE FENTE.
 MARCA PARA EL PRINCIPIO O FINAL DE LA ABERTURA.



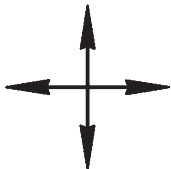
SLASH
 FENTE
 CORTE



BUTTONHOLE
 BOUTONNIERE
 OIAL

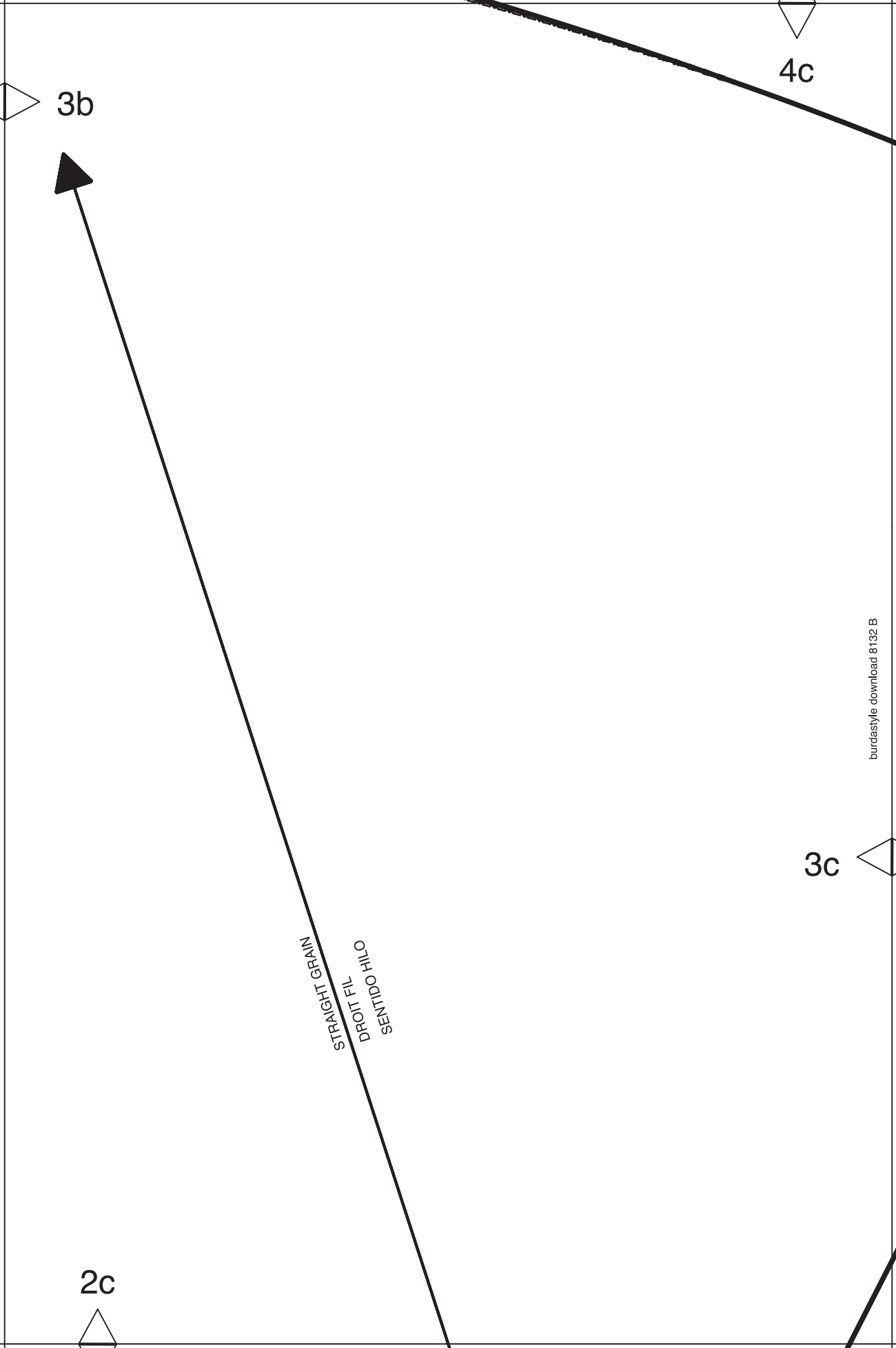


BUTTON OR SNAP
 BOUTON OU BOUTON—PRESSION
 BOTON O BROCHE DE PRESION



SEE CUTTING DIAGRAMS FOR STRAIGHT GRAIN OF FABRIC
 SENS DU DROIT—FIL VOIR LES PLANS DE COUPE
 DIRECCION DEL HILO, VEANSE PLANOS DE CORTE

2b



3b

4c

3c

2c

STRAIGHT GRAIN
PROFILE
SENTDILLO

4d

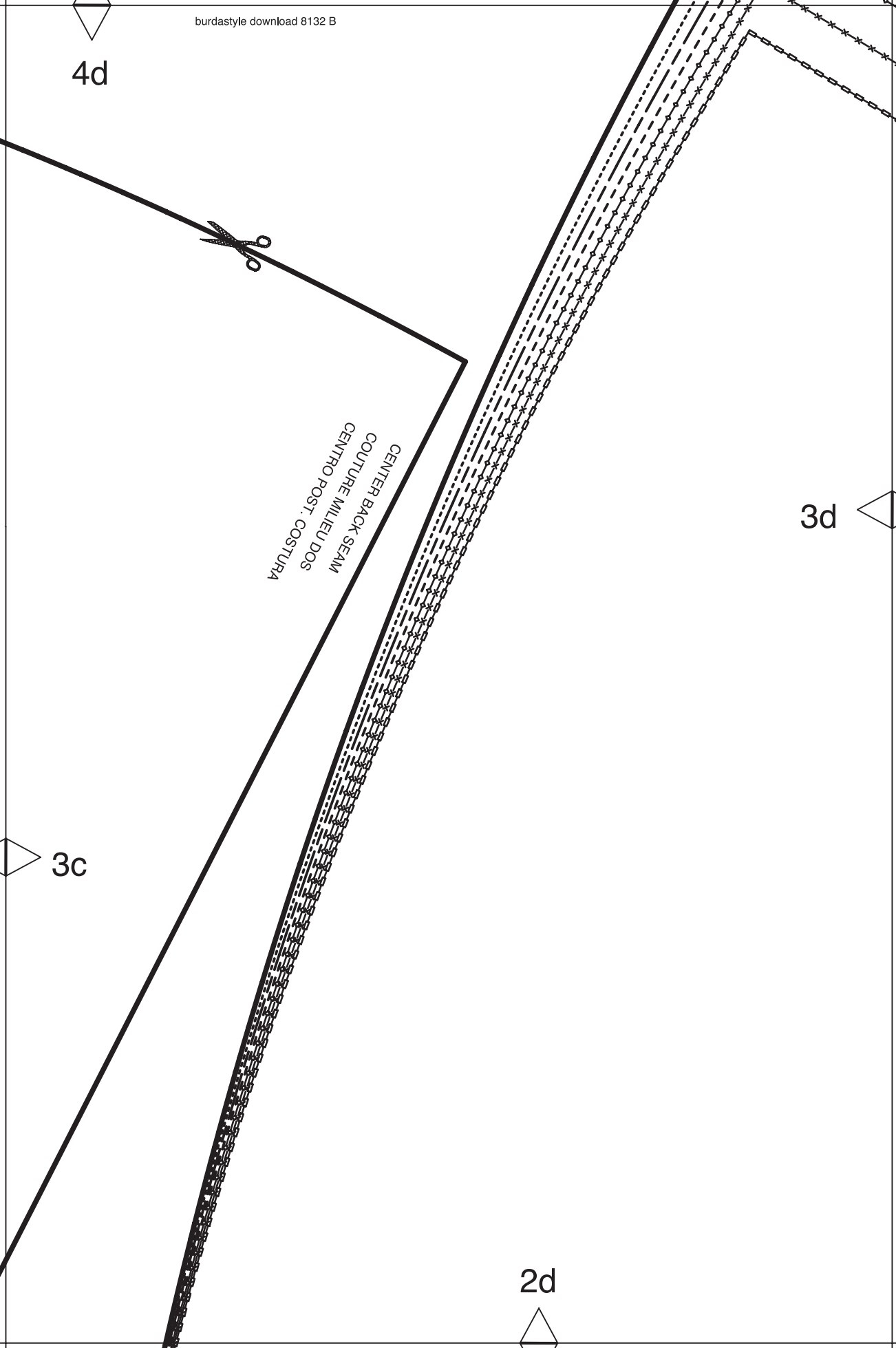


CENTER BACK SEAM
COUTURE MILIEU DOS
CENTRO POST. COSTURA

3d

3c

2d



4e

48

46

44

42

40

38

36

3d

3e

4

FRONT SKIRT PANEL
DEVANT JUPE
FALDA ANTERIOR

ON THE FOLD



1 x

DANS LA PLIURE DU TISSU
CON CANTO DOBLADO

FABRIC LINING
TISSU + DOUBLURE
TELA FORRO

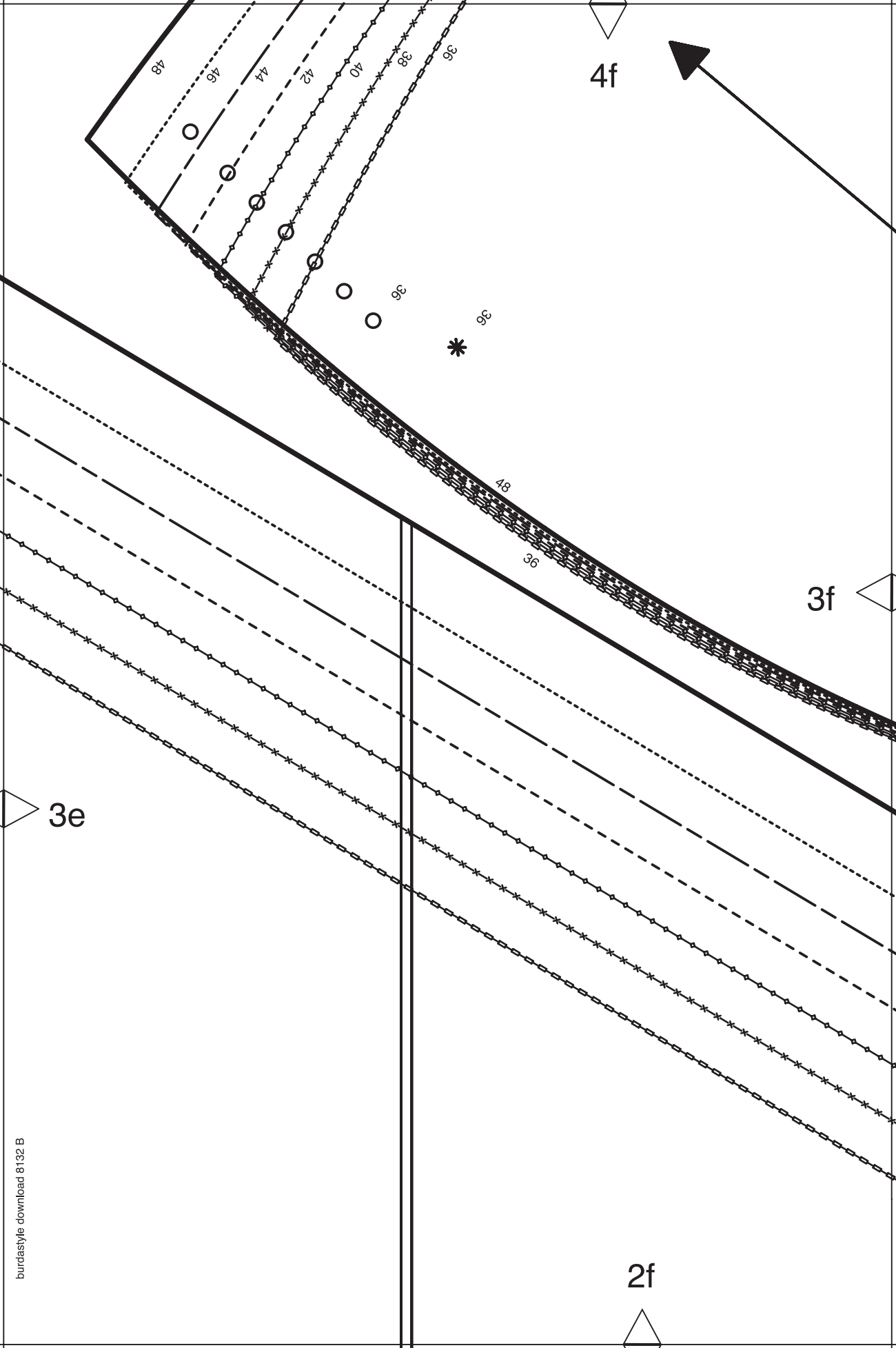
SEAM ALLOWANCE INCLUDED
AVEC VALEUR DE COUTURE
CON MARGEN DE COSTURA

5/8" (1.5cm)

Burda
STYLE

www.burdastyle.com

2e



4g

3g

STRAIGHT GRAIN
DROIT FIL
SENTIDO HILO

3f

GATHER
FRONCER
FRUNCIR



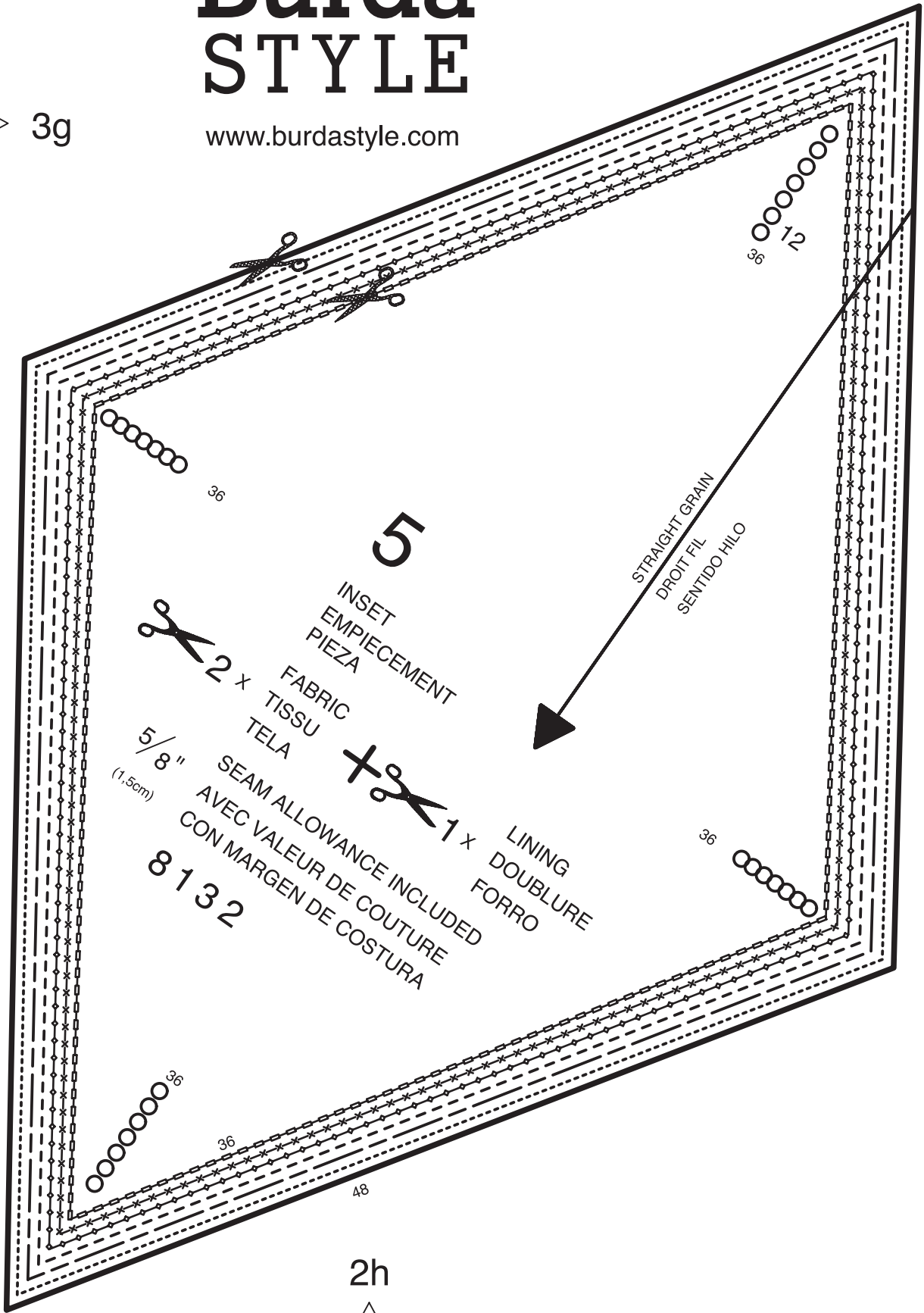
2g

4h

Burda STYLE

www.burdastyle.com

3g



6a

5a

36

38

40

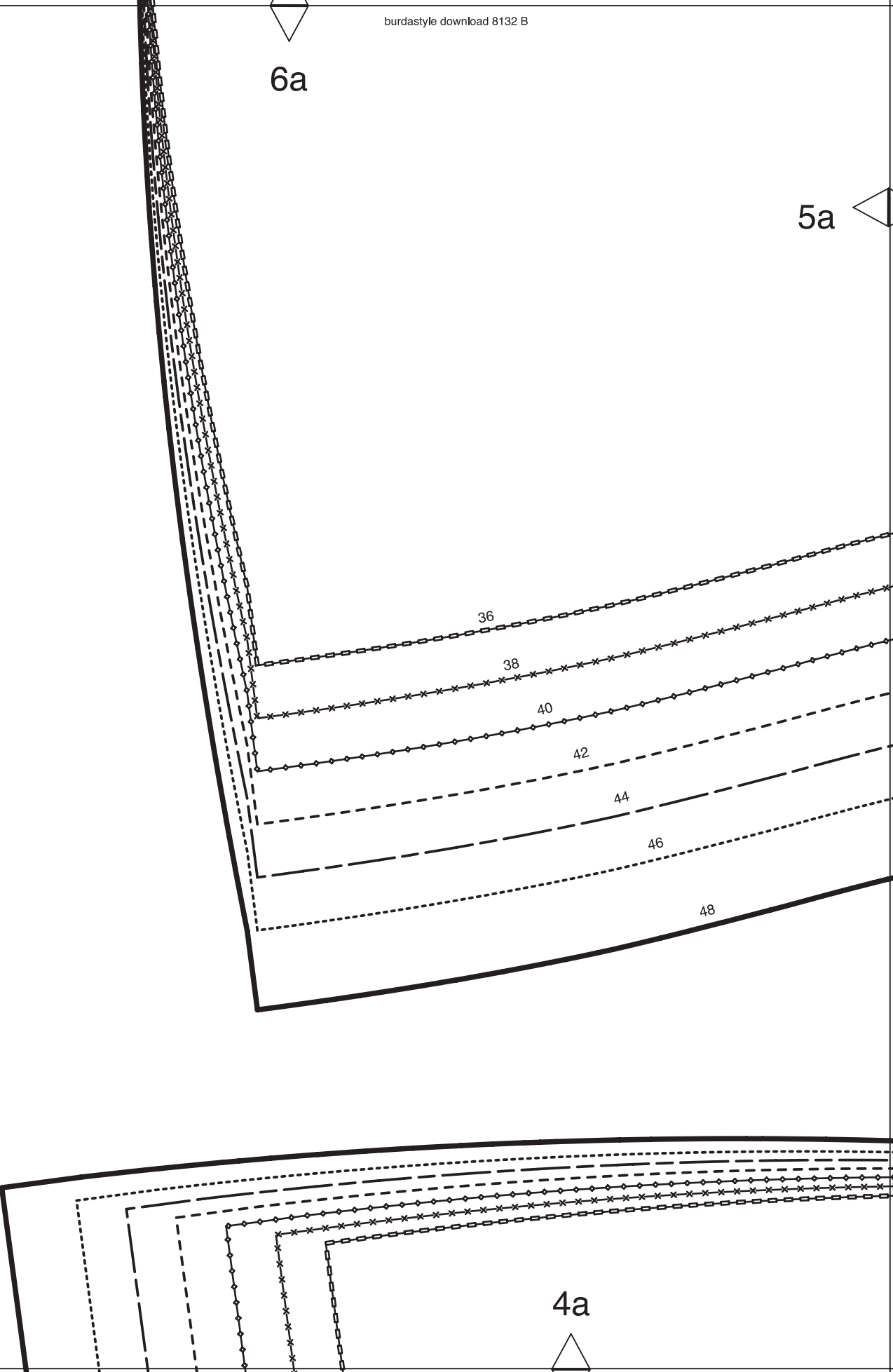
42

44

46

48

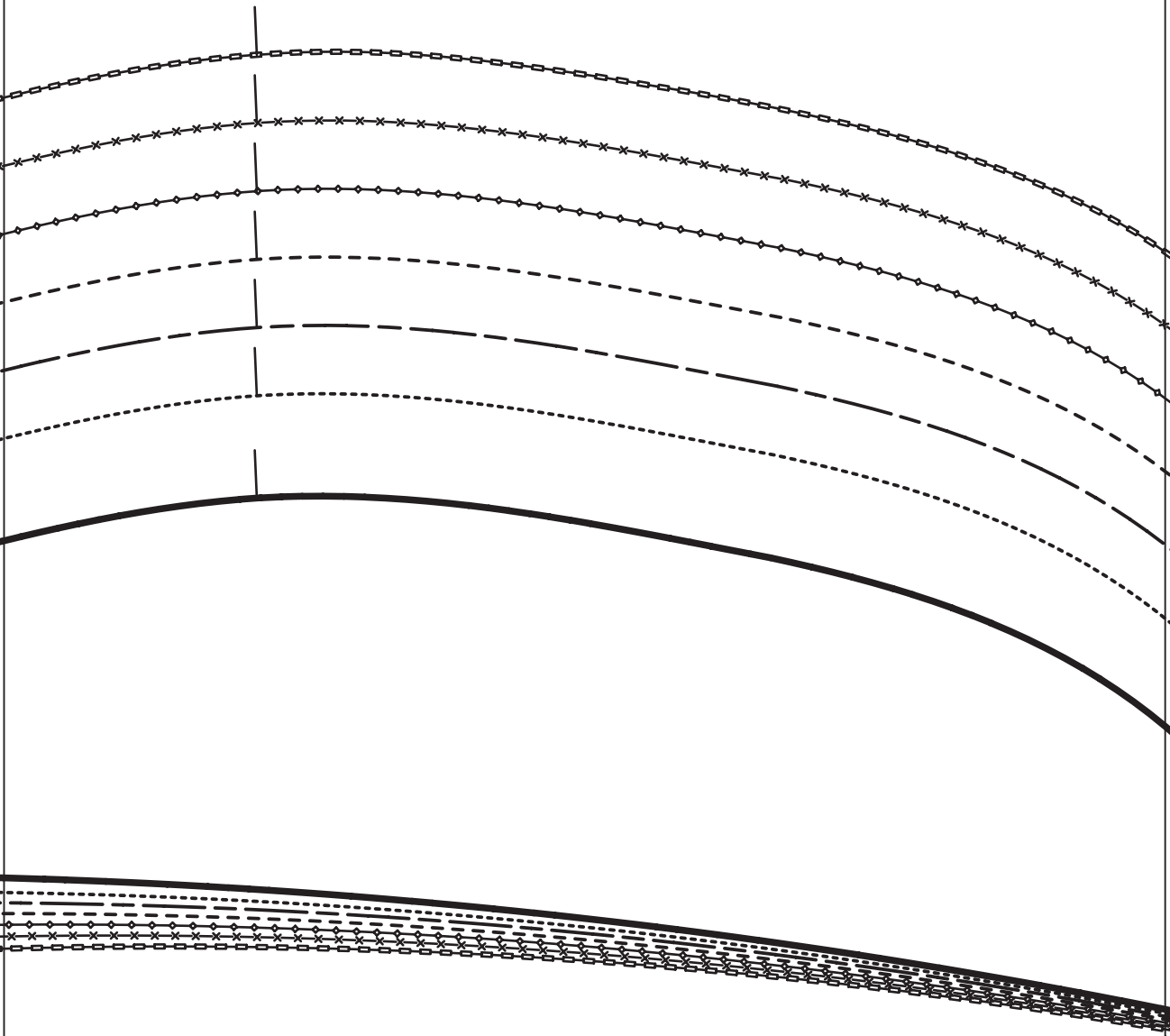
4a



6b

5a

5b



4b



6c

6

BACK
DOS
ESPALDA



2 x

FABRIC
TISSU
TELA



LINING
DOUBLURE
FORRO

5/8"
(1.5cm)

SEAM ALLOWANCE INCLUDED
AVEC VALEUR DE COUTURE
CON MARGEN DE COSTURA

8 1 3 2

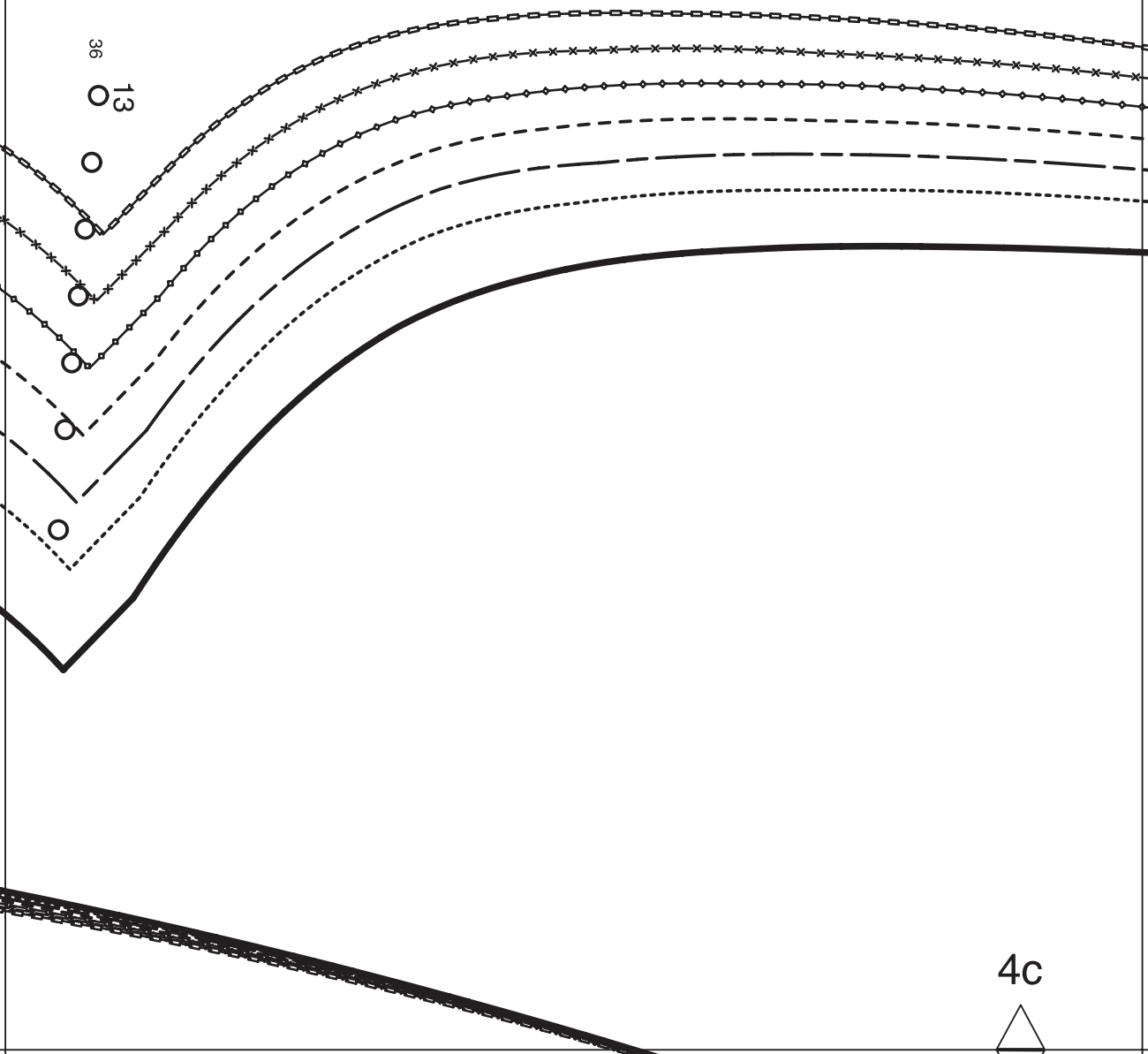
Burda
STYLE
www.burdastyle.com

5c

4c

5b

36
13





6d

5d

5c

Burda STYLE

www.burdastyle.com

4d

FINISHED
BUST
SIZE

TOUR DE
POITRINE

6e

CONTORNO
BUSTO

36	36	$\frac{1}{4}$ "	92cm
38	37	$\frac{3}{4}$ "	96cm
40	39	$\frac{1}{2}$ "	100cm
42	41"	$\frac{1}{2}$ "	104cm
44	42	$\frac{1}{2}$ "	108cm
46	44	$\frac{1}{2}$ "	112cm
48	46	$\frac{1}{2}$ "	118cm

5d

5e

4e

6f

5f

1

UPPER FRONT
PIECE SUPERIEURE DEVANT
DELANTERO SUPERIOR



2 x

FABRIC
TISSU
TELA



LINING
DOUBLURE
FORRO

5/8"

SEAM ALLOWANCE INCLUDED
AVEC VALEUR DE COUTURE
CON MARGEN DE COSTURA

(1.5cm)

8 1 3 2

Burda
STYLE

www.burdastyle.com

12



5e

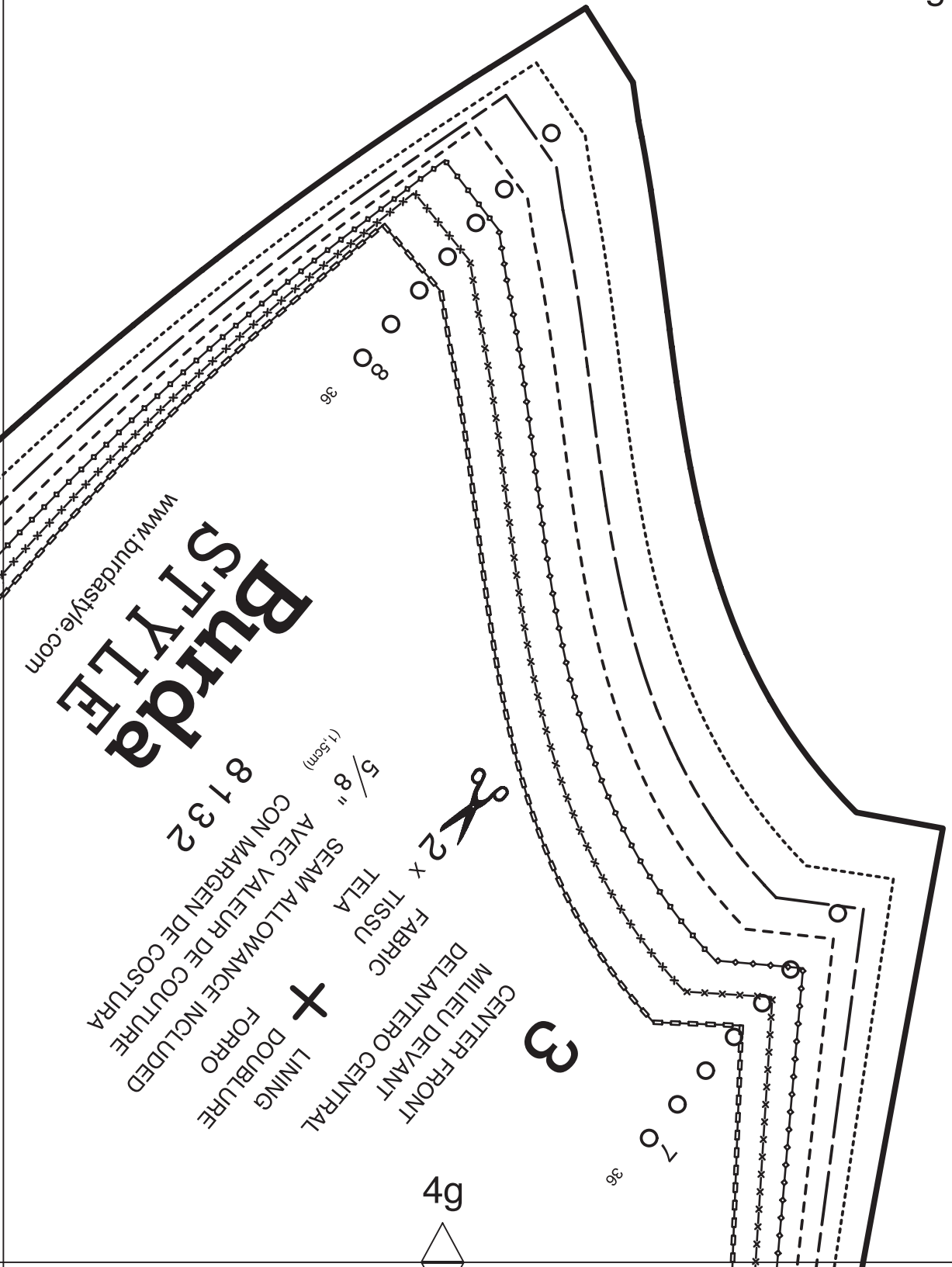
GATHER
FRONCER
FRUNCIR

4f

5f

6g

5g



www.burdastyle.com

Burda STYLE

8132

2 x FABRIC
 DELANTERO CENTRAL
 MILIEU DEVANT
 SEAM ALLOWANCE INCLUDED
 AVEC VALEUR DE COUTURE
 CON MARGEN DE COSTURA
 5/8" (1.5cm)
 FABRIC
 TISSU
 TELA
 SEAM ALLOWANCE INCLUDED
 AVEC VALEUR DE COUTURE
 CON MARGEN DE COSTURA
 5/8" (1.5cm)

+
 LINING
 DOUBLURE
 FORRO

3

4g

6h

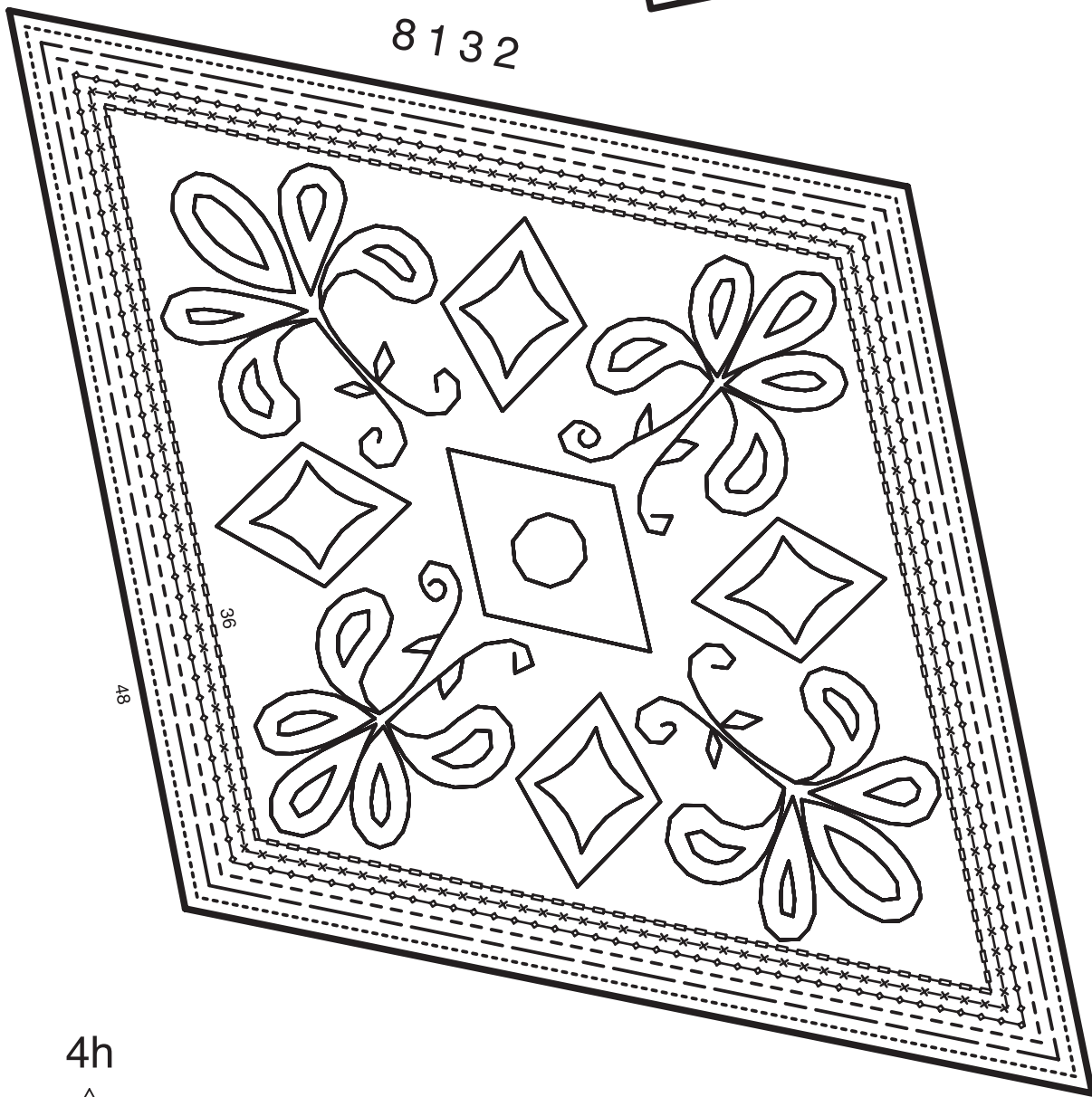
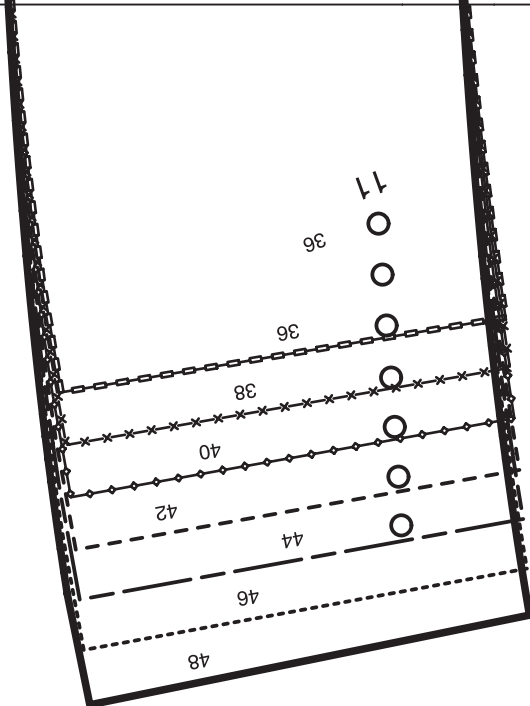
5g

Burda STYLE

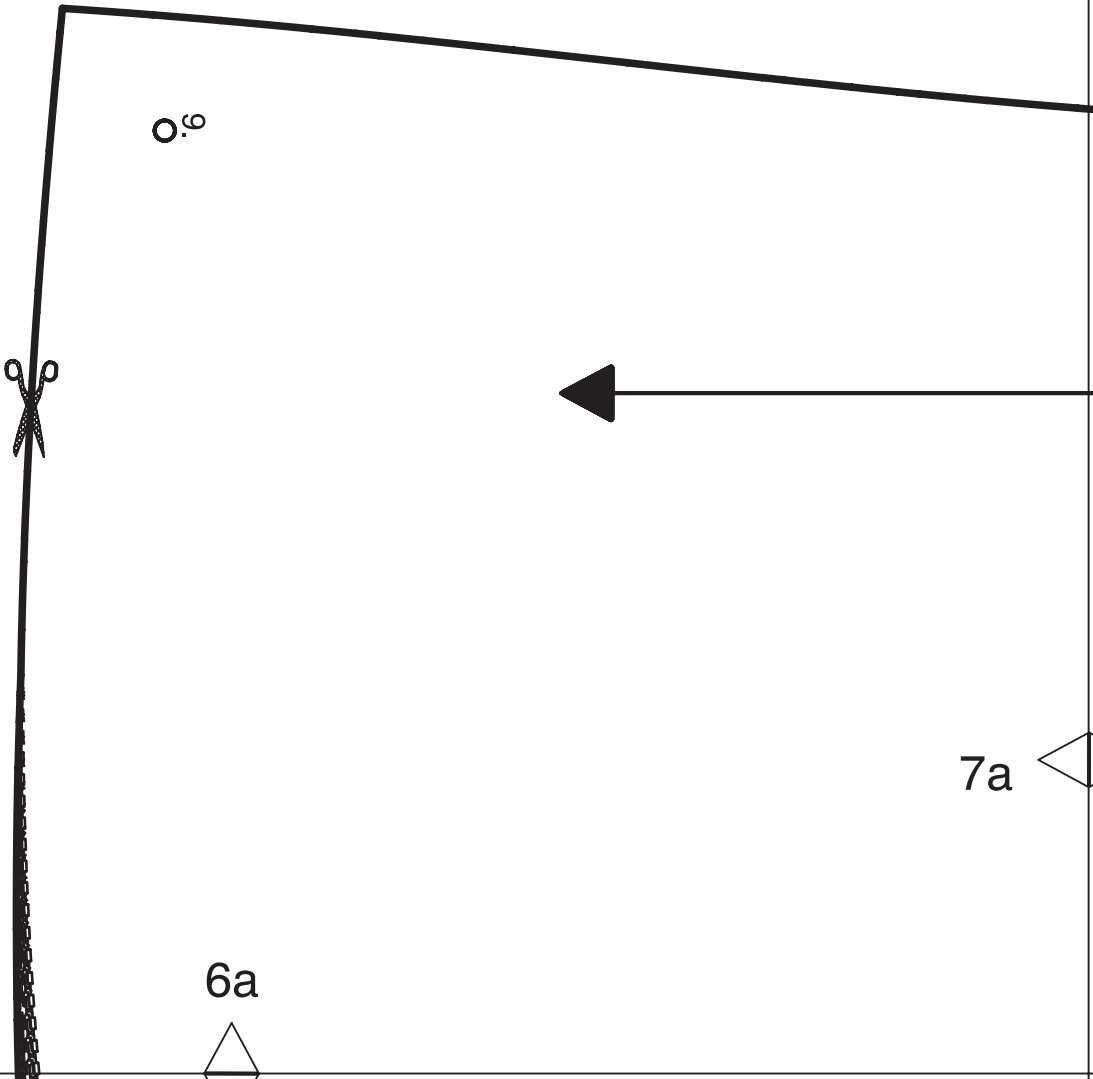
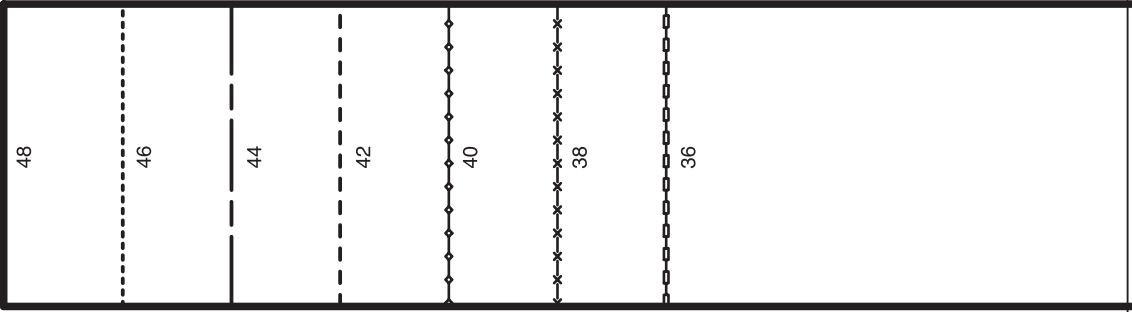
www.burdastyle.com

11

8132



4h



10



LINING
DOUBLURE
FORRO

$\frac{5}{8}$ "
(1,5cm)

SEAM ALLOWANCE INCLUDED
AVEC VALEUR DE COUTURE
CON MARGEN DE COSTURA

8 1 3 2

WAIST
TAILLE
CINTURA

STRAIGHT GRAIN
DROIT FIL
SENTIDO HILO

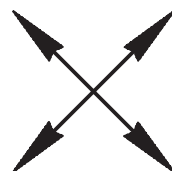
7b

7a

6b

Burda STYLE

www.burdastyle.com



CENTER BACK
MILIEU DOS
CENTRO POST.

ZIPPER
FERMETURE A GLISSIERE
CREMALLERA

STRAIGHT GRAIN
DROIT FIL
SENTIDO HILO

7b

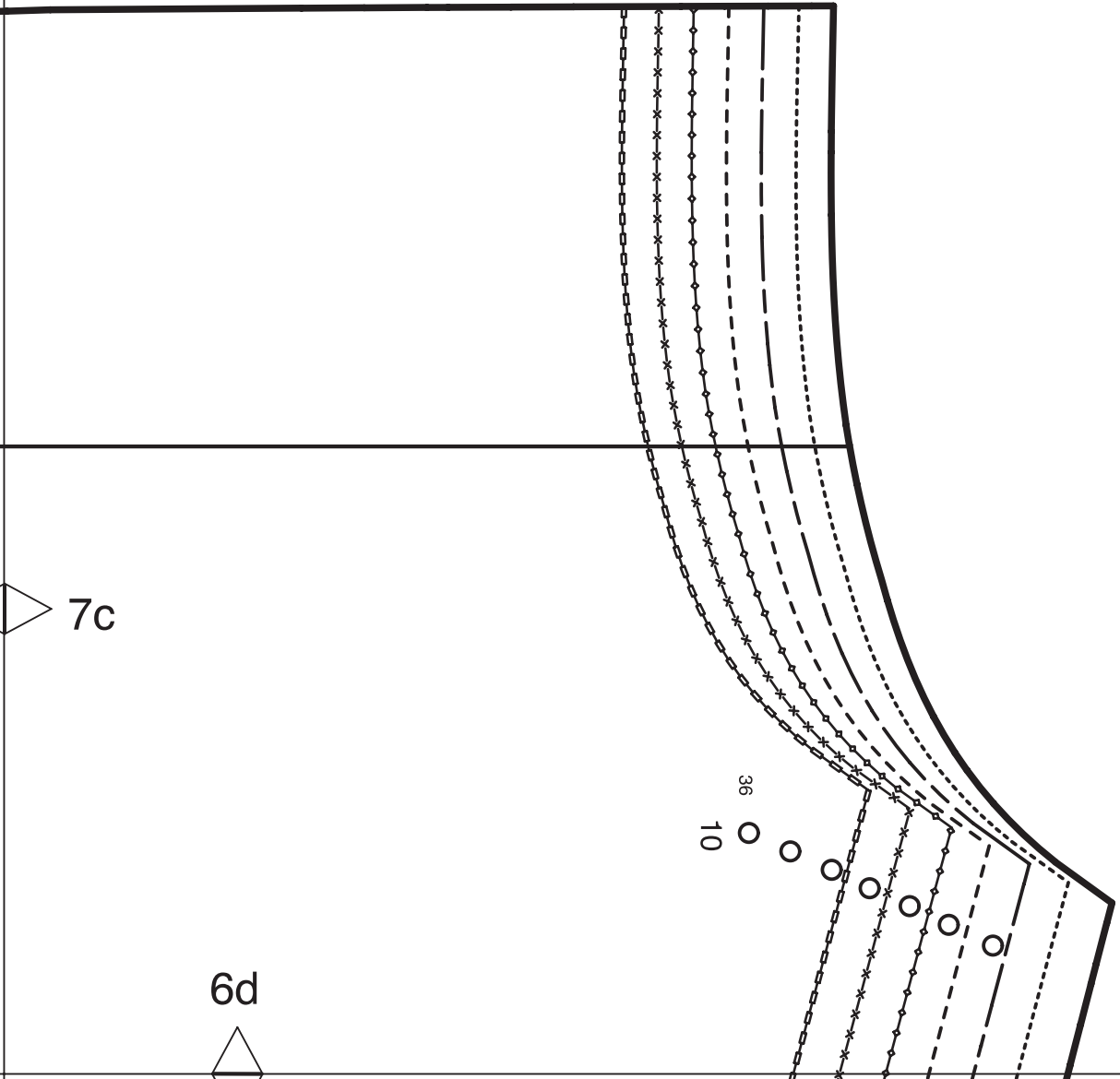
7c

6c





7d



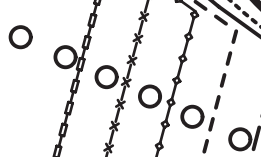
7c



6d

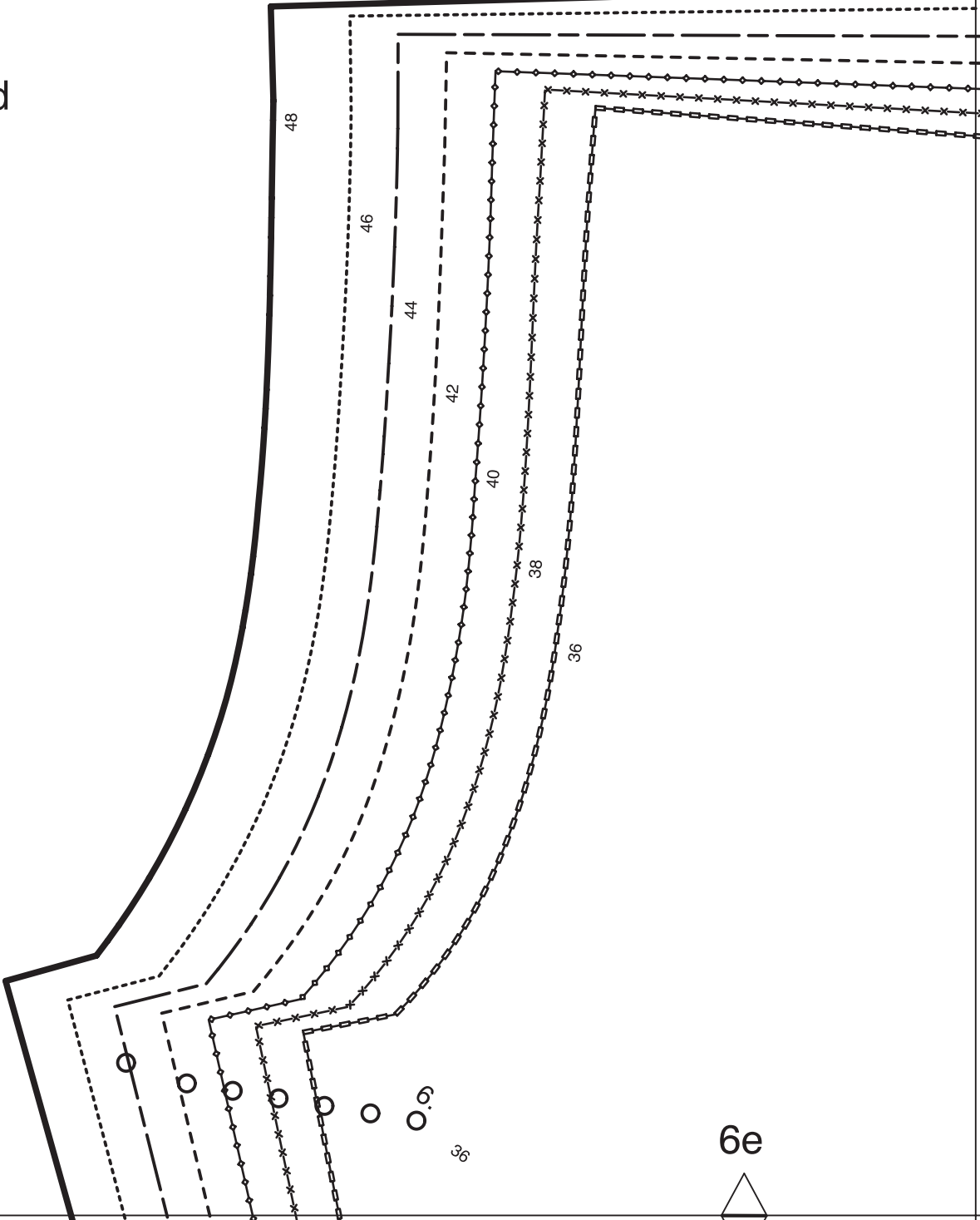


36
10

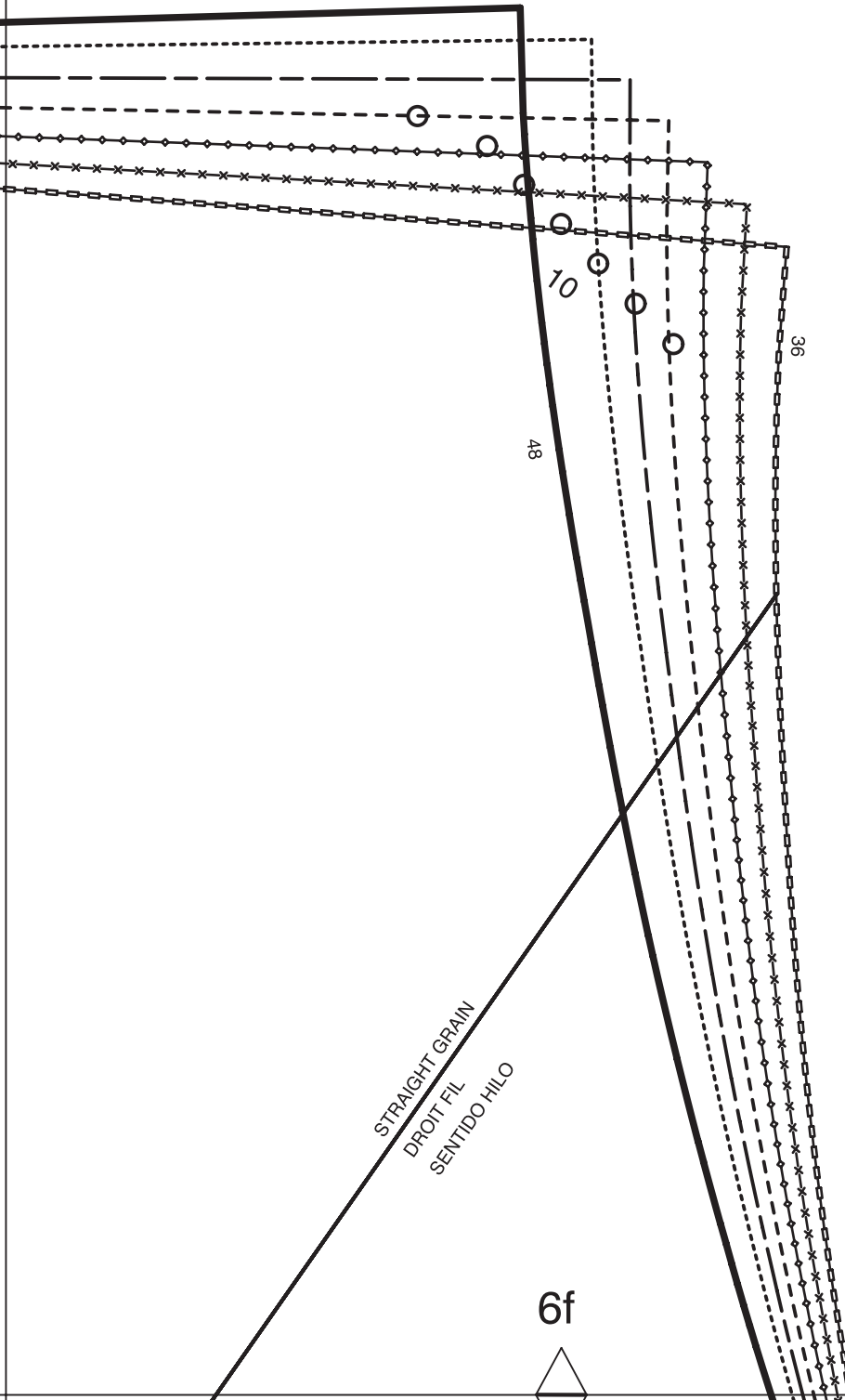


7e

7d



7e



48

10

36

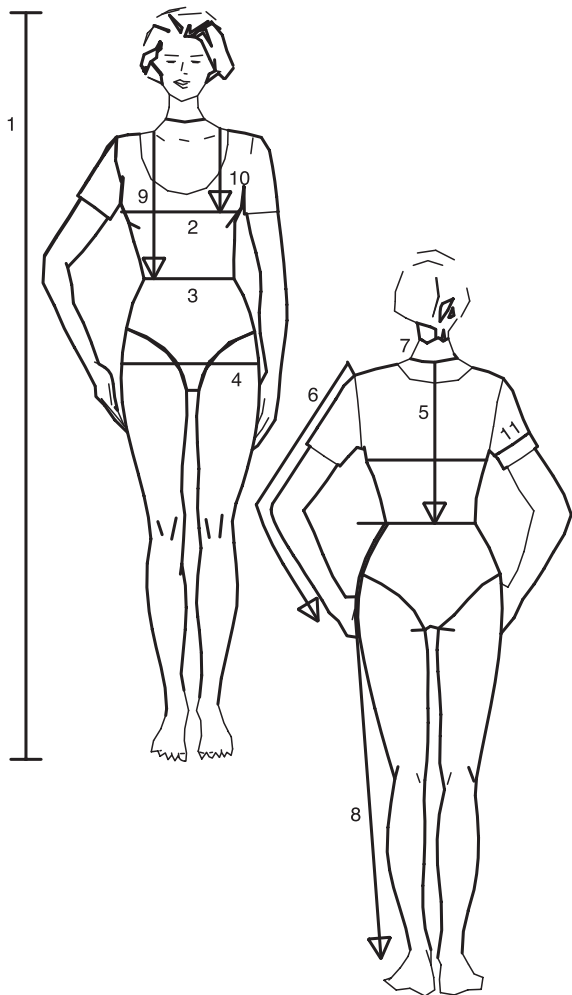
STRAIGHT GRAIN
DROIT FIL
SENTIDO HILO

6f

7f

Size
Taille
Talla

		32	34	36	38	40	42	44	46	48	50	52	54	56	58	60
1	inches	66 1/4	66 1/4	66 1/4	66 1/4	66 1/4	66 1/4	66 1/4	66 1/4	66 1/4	66 1/4	66 1/4	66 1/4	66 1/4	66 1/4	66 1/4
	cm	168	168	168	168	168	168	168	168	168	168	168	168	168	168	168
2	inches	30	31 1/2	33	34 3/4	36 1/4	37 3/4	39 1/2	41	43 1/2	45 1/2	48	50 1/2	52 3/4	55 1/4	57 1/2
	cm	76	80	84	88	92	96	100	104	110	116	122	128	134	140	146
3	inches	23	24 1/2	26	27 3/4	29 1/4	30 3/4	32 1/2	34	36 1/4	38 3/4	41	43 1/2	45 1/2	48	50 1/2
	cm	58	62	66	70	74	78	82	86	92	98	104	110	116	122	128
4	inches	32 1/2	34	35 1/2	37	38 3/4	40 1/4	41 3/4	43 1/2	45 1/2	48	50 1/2	52 3/4	55 1/4	57 1/2	60
	cm	82	86	90	94	98	102	106	110	116	122	128	134	140	146	152
5	inches	15 3/4	16	16 1/4	16 1/2	16 1/2	16 3/4	17	17 1/4	17 1/4	17 1/2	17 3/4	18	18 1/4	18 1/2	18 1/2
	cm	40	40,5	41	41,5	42	42,5	43	43,5	44	44,5	45	45,5	46	46,5	47
6	inches	23 1/4	23 1/4	23 1/4	23 3/4	23 3/4	24	24	24	24	24 1/2	24 1/2	24 1/2	24 3/4	24 3/4	24 3/4
	cm	59	59	59	60	60	61	61	61	61	62	62	62	63	63	63
7	inches	13	13 1/2	14 1/4	14 1/2	14 3/4	15	15 1/2	15 3/4	16 1/4	16 1/2	17	17 1/4	17 3/4	18 1/4	18 1/2
	cm	33	34	35	36	37	38	39	40	41	42	43	44	45	46	47
8	inches	39 3/4	40 1/4	40 1/4	40 3/4	41	41	41 1/2	41 1/2	41 1/2	41 3/4	41 3/4	41 3/4	42 1/4	42 1/2	42 1/2
	cm	101	102	102	103	104	104	105	105	105	106	106	106	107	108	108
9	inches	16 1/2	17	17 1/4	17 3/4	18 1/4	18 1/2	19	19 1/4	19 3/4	20 1/4	20 1/2	21	21 1/4	21 3/4	22 1/4
	cm	42	43	44	45	46	47	48	49	50	51	52	53	54	55	56
10	inches	9 1/2	9 7/8	10 1/4	10 3/4	11 1/8	11 1/2	11 7/8	12 1/4	12 3/4	13	13 1/2	14 1/4	14 1/2	14 3/4	15
	cm	24	25	26	27	28	29	30	31	32	33	34	35	36	37	38
11	inches	9 7/8	10 1/4	10 3/4	11 1/8	11 1/2	11 7/8	12 1/4	12 3/4	13 1/2	14 1/2	15	15 3/4	16 1/2	17 1/4	18 1/4
	cm	25	26	27	28	29	30	31	32	34	36	38	40	42	44	46



anglais

1. Height
2. Bust
3. Waist
4. Hip
5. Back length
6. Sleeve length
7. Neck width
8. Side leg length
9. Front waist length
10. Bust point
11. Upper arm circumf.

For dresses, blouses, coats and jackets select size according to bust measurement, for trousers and skirts according to hip measurement!
All burda patterns are prepared with ease allowance appropriate for style in question.

français

1. Stature
2. Tour de poitrine
3. Tour de taille
4. Tour des hanches
5. Long. du dos
6. Longueur de manche
7. Tour de cou
8. Long. côté pantalon
9. Long. taille devant
10. Profondeur de poitrine
11. Tour du bras

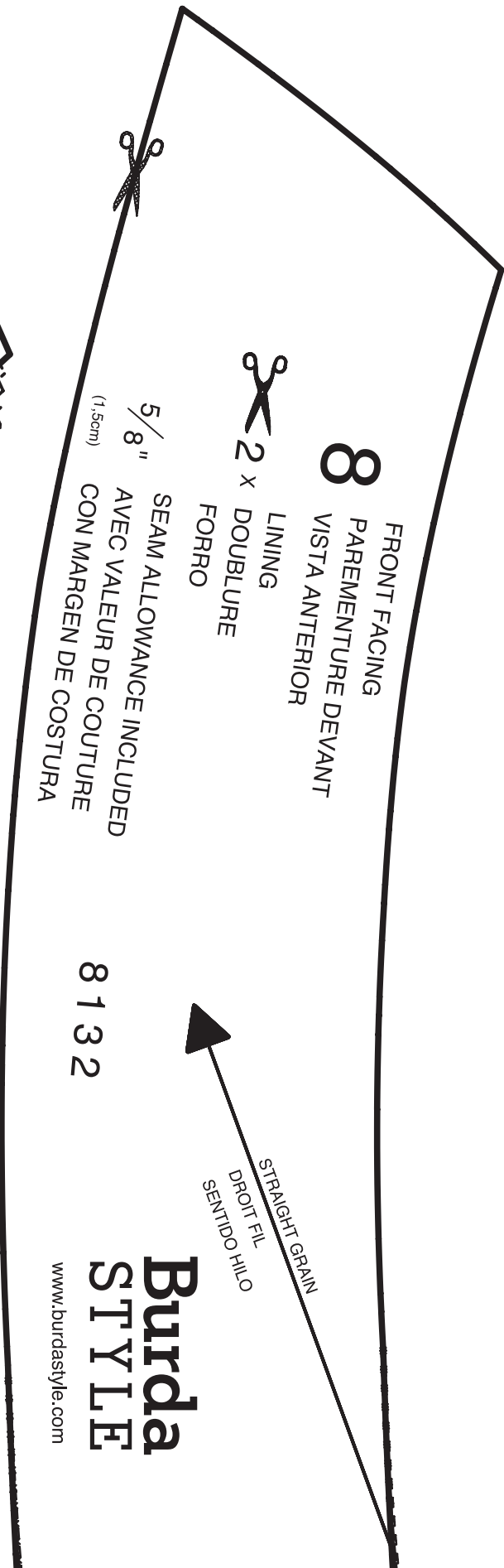
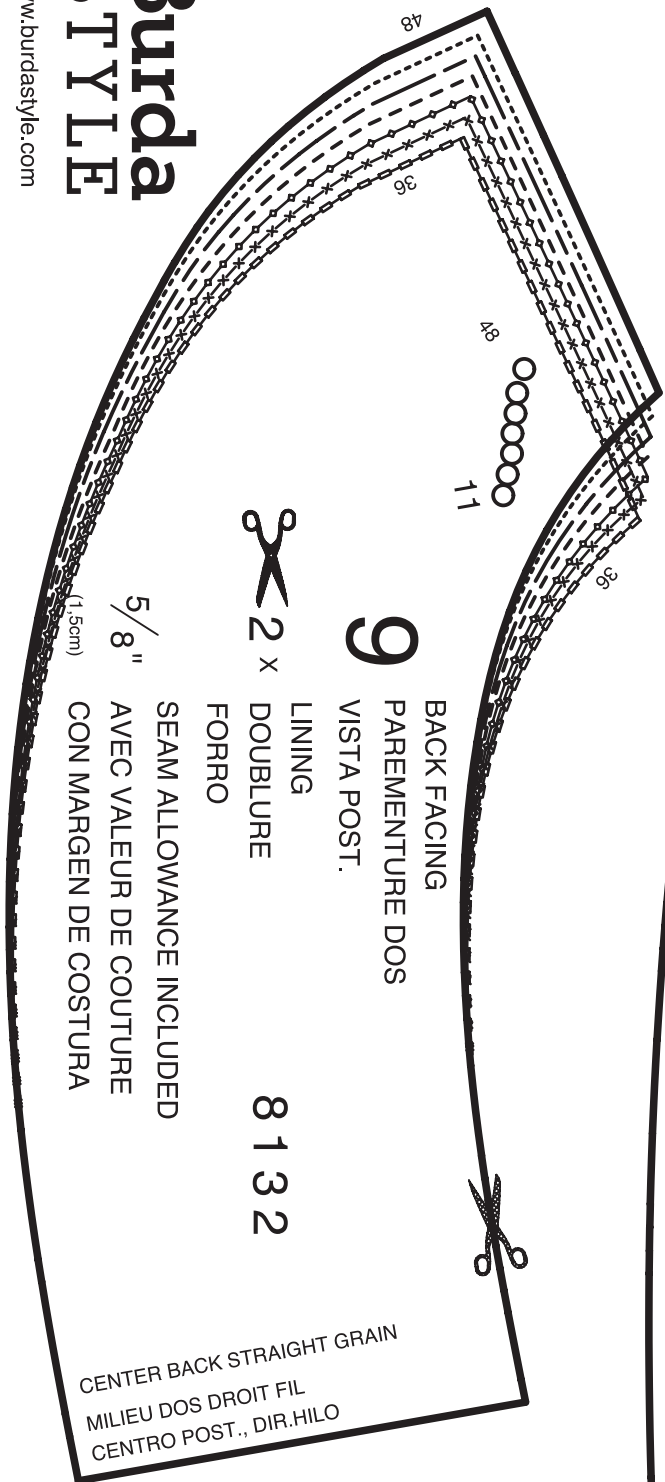
Robes, corsages, manteaux et vestes seront choisis d'après votre tour de poitrine les pantalons et les jupes d'après votre tour de hanches!
Tous les patrons sont établis avec l'aisance nécessaire selon le genre du modèle.

español

1. Estatura
2. Contorno busto
3. Contorno cintura
4. Contorno cadera
5. Largo espalda
6. Largo manga
7. Contorno cuello
8. Largo lateral del pantalón
9. Largo talle delantero
10. Altura de pecho
11. Cont. de brazo

La talla para los vestidos, blusas, abrigos y chaquetas, se determina de acuerdo con el contorno del busto. Los pantalones y las faldas, de acuerdo con el contorno de las caderas.
En el patrón—Burda se incluyen los márgenes para la holgura necesaria.

Burda STYLE



Burda STYLE

7g

6h