

Maddy Top



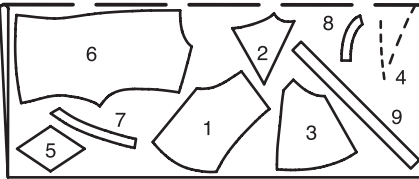
2a

STRAIGHT GRAIN
DROIT FIL
SENIDO HILO

7 36

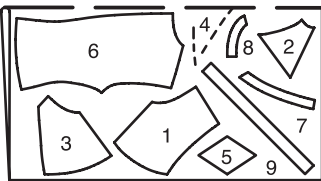
1a

45" 114 CM



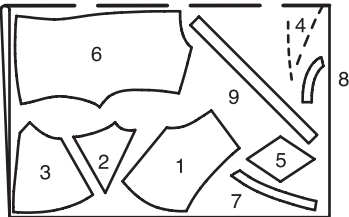
40-48

45" 114 CM



36-38

55" 140 CM



36-48

3

CENTER FRONT
MILIEU DEVANT
DELANTERO CENTRAL



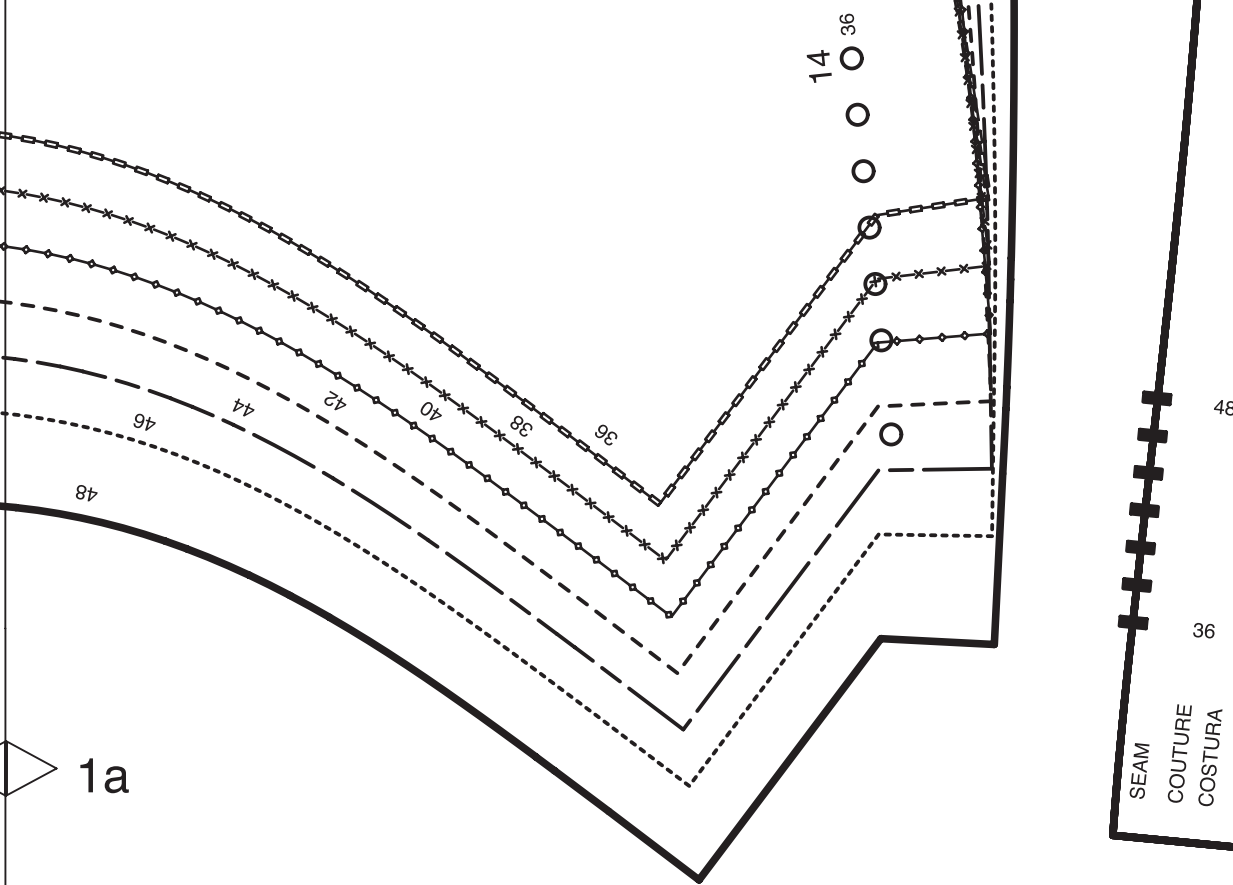
SEAM ALLOWANCE INCLUDED
AVEC VALEUR DE COUTURE
CON MARGEN DE COSTURA

5/8"
(1.5cm)

8132

Burda
STYLE

www.burdastyle.com



1a

2b

1b

SEAM
COUTURE
COSTURA

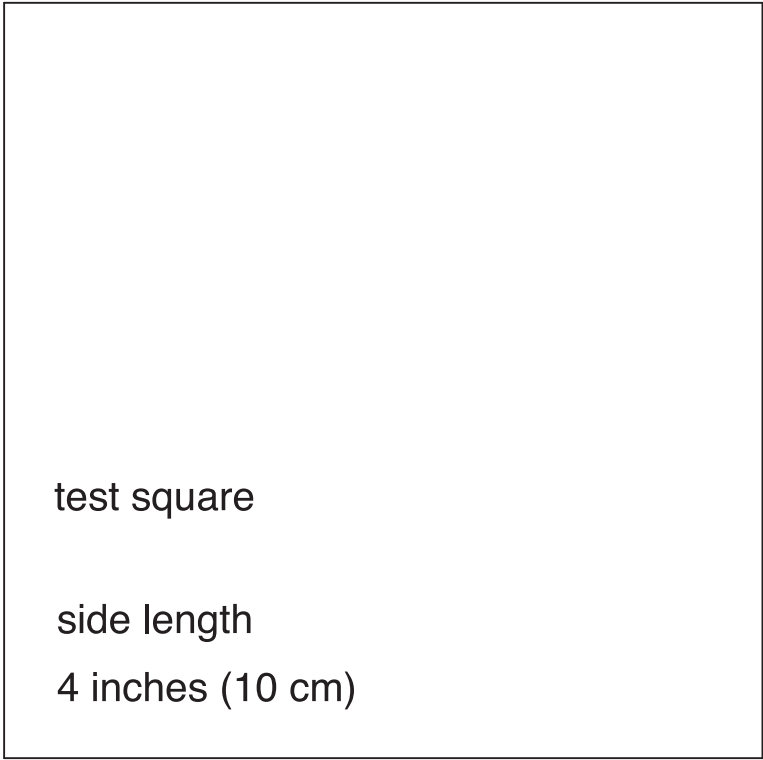
2c

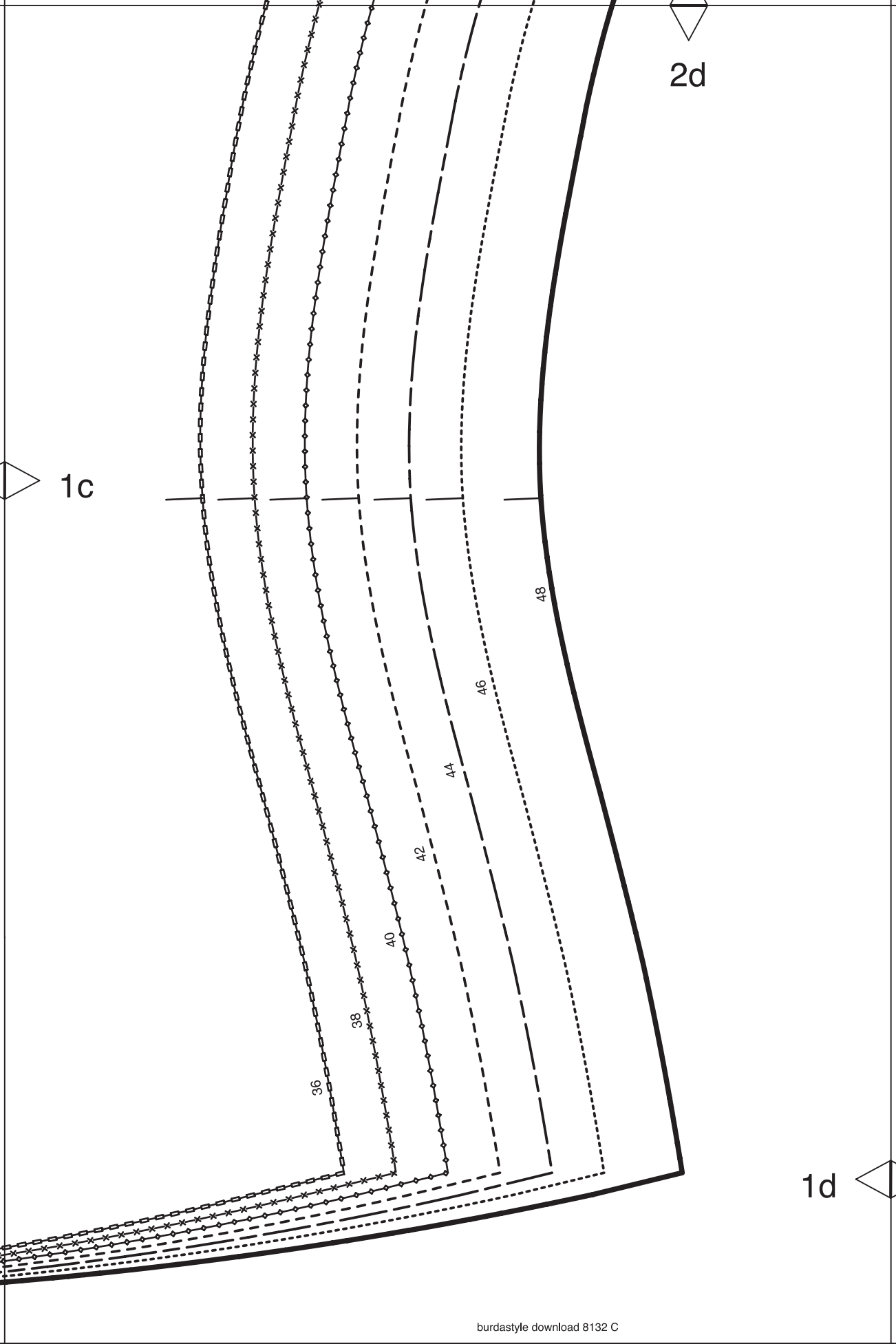
1b

STRAIGHT GRAIN
DROIT FIL
SENTIDO HILO

1c

WAIST
TAILLE
CINTURA





1c

2d

1d

36

38

40

42

44

46

48

2e

36

48

www.burdastyle.com

Burda
STYLE

8132

(1.5cm)

5/8"

SEAM ALLOWANCE INCLUDED
AVEC VALEUR DE COUTURE
CON MARGEN DE COSTURA



UPPER SIDE FRONT
COTE DEVANT LATERAL SUPERIEUR
DELANTERO LATERAL SUPERIOR

2

STRAIGHT GRAIN
DROIT FIL
SENTIDO HILO

1e



1d

48

46

44

42

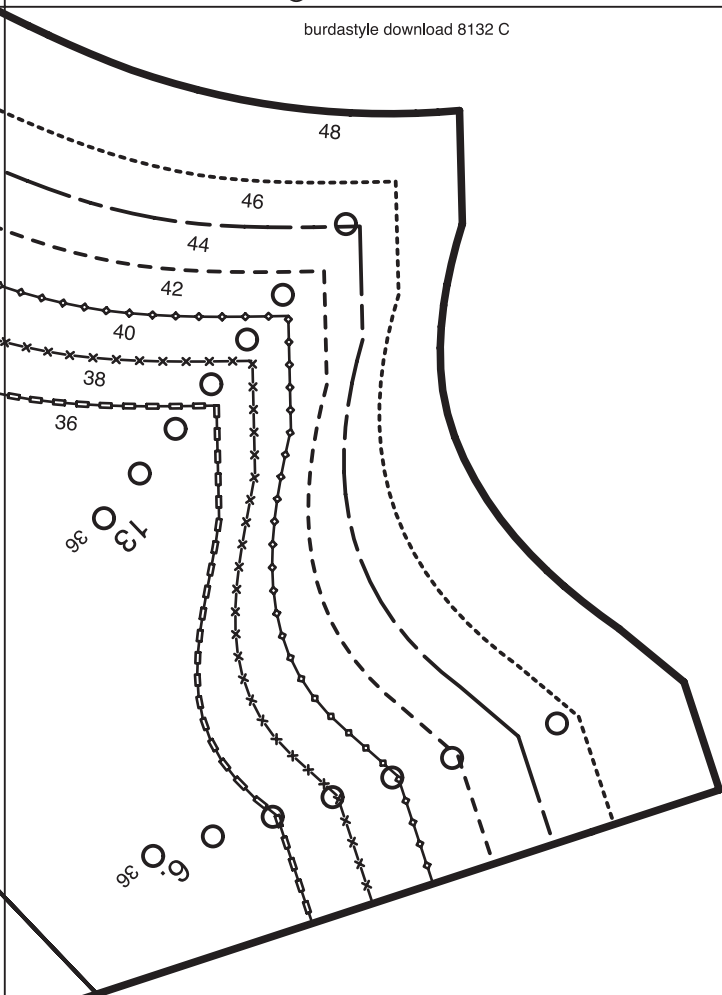
40

38

36

14

36



WAIST
 TAILLE
 CINTURA

Burda STYLE

www.burdastyle.com

4

LOWER FRONT
 PIECE INFÉRIEURE DEVANT
 DELANTERO INFERIOR



1 x

ON THE FOLD
 DANS LA PLIURE DU TISSU
 CON CANTO DOBLADO

$\frac{5}{8}$ "

(1,5cm)

SEAM ALLOWANCE INCLUDED
 AVEC VALEUR DE COUTURE
 CON MARGEN DE COSTURA

8132

CENTER FRONT FOLD, STRAIGHT GRAIN
 MILIEU DEVANT PLIURE, DROIT FIL
 MEDIO DELANTERO DOBLEZ SENT.HILO



1e

4a

FINISHED
BUST
SIZE

TOUR DE
POITRINE

CONTOURNO
BUSTO

36	36	1/4"	92cm
38	37	3/4"	96cm
40	39	1/2"	100cm
42	41"	1/2"	104cm
44	42	1/2"	108cm
46	44	1/2"	112cm
48	46	1/2"	118cm

3a

GATHER
FRONCER
FRUNCIR

GATHER
FRONCER
FRUNCIR

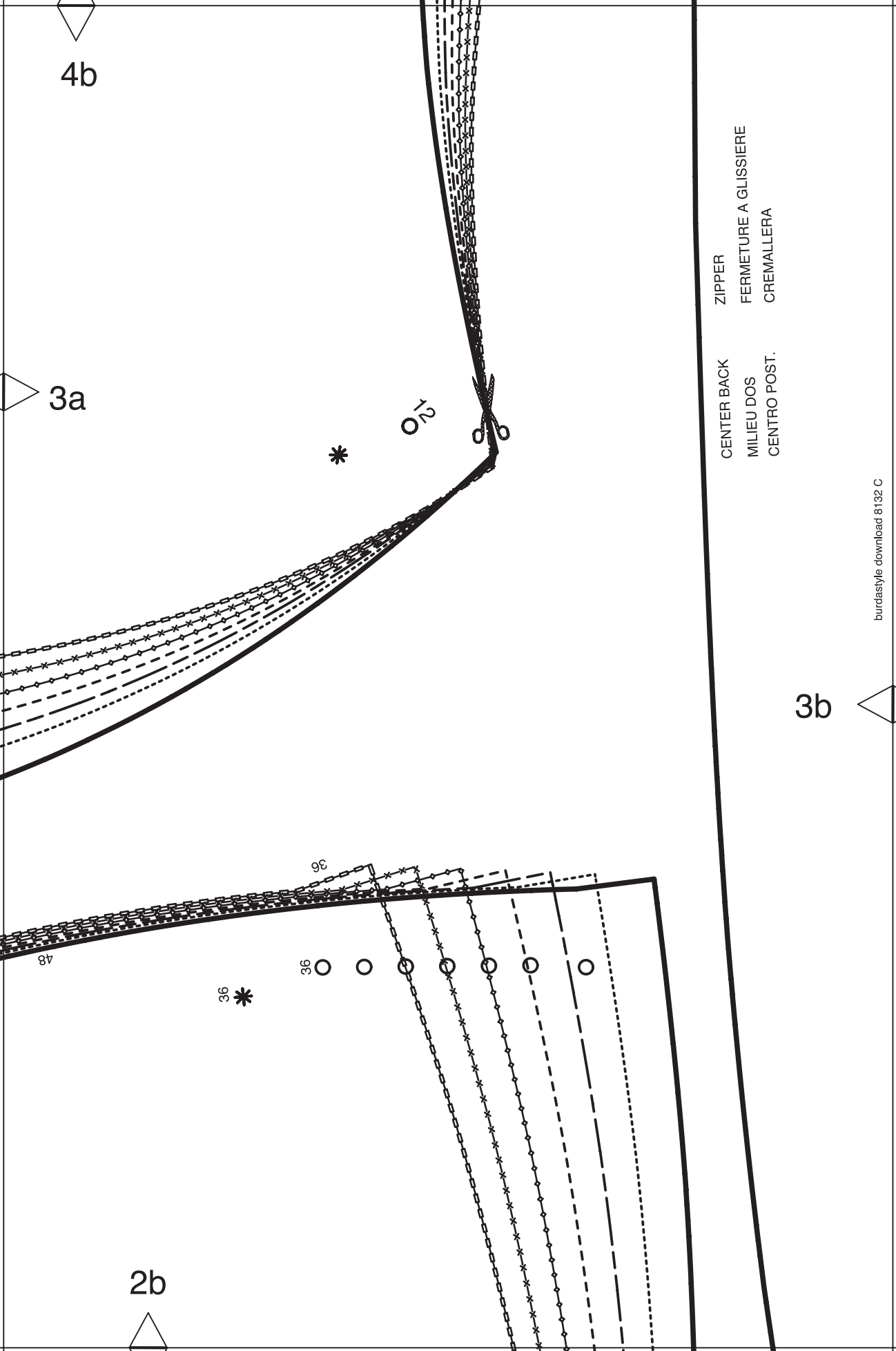
2a

4b

3a

3b

2b



ZIPPER
FERMETURE A GLISSIERE
CREMALLERA

CENTER BACK
MILIEU DOS
CENTRO POST.

4c

6

BACK
DOS
ESPALDA



$\frac{5}{8}$ "
(1,5cm)

SEAM ALLOWANCE INCLUDED
AVEC VALEUR DE COUTURE
CON MARGEN DE COSTURA

8 1 3 2

Burda
STYLE

www.burdastyle.com

3b

STRAIGHT GRAIN
DROIT FIL
SENTIDO HILO

3c

2c

3c



4d

Burda STYLE

www.burdastyle.com

3d

2d

KEY TO SYMBOLS

LEGENDE

INTERPRETACION DE LOS SIMBOLOS



SYMBOL FOR STITCHING LINES
REMARQUE CONCERNANT LES LIGNES DE PIGURES
INDICACION PARA LINEAS DE PESPUNTE



SEAM ATTACHMENT POINT
POINT DE RACCORD DE LA COUTURE
PUNTO DE AJUSTE DE LA COSTURA



SEAM NUMBERS ARE MATCHING SYMBOLS AND DENOTE
WHERE TWO PIECES SHOULD BE SEWN TOGETHER.
LES CHIFFRES-REPERES INDIQUENT OU ASSEMBLER LES PIECES.
LES CHIFFRES IDENTIQUES COINCIDENT.
LOS NUMEROS DE COSTURA INDICAN DONDE LAS PIEZAS.
LOS MISMOS NUMEROS COINCIDEN.



GATHER BETWEEN THE STARS.
FRONCER ENTRE LES ASTERISQUES.
EMBEBER ENTRE LAS ESTRELLAS.



EASE IN BETWEEN THE DOTS.
SOUTENIR ENTRE LES POINTS.
EMBEBER ENTRE LOS PUNTOS.



POSITION PLEATS IN DIRECTION OF ARROW.
POSER LES PLIS DANS LE SENS DES FLECHES.
PONER LOS PLIEQUES SEGUN LA FLECHA.



SYMBOL INDICATING THE BEGINNING OR END OF VENT.
REPERE DE DEBUT OU DE FIN DE FENTE.
MARCA PARA EL PRINCIPIO O FINAL DE LA ABERTURA.



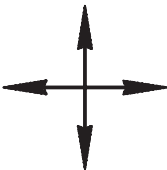
SLASH
FENTE
CORTE



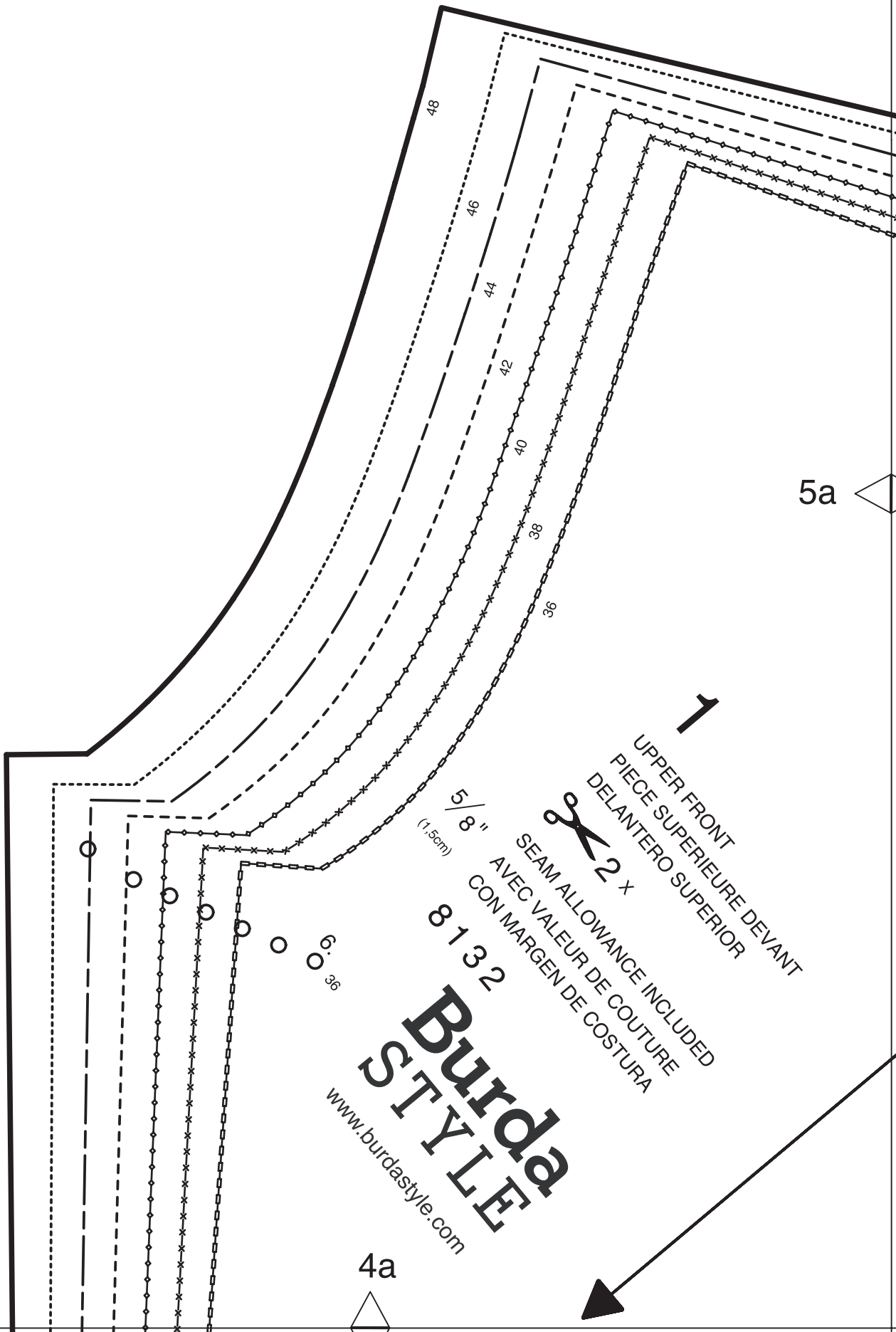
BUTTONHOLE
BOUTONNIERE
OIAL



BUTTON OR SNAP
BOUTON OU BOUTON-PRESSION
BOTON O BROCHE DE PRESION



SEE CUTTING DIAGRAMS FOR STRAIGHT GRAIN OF FABRIC
SENS DU DROIT-FIL VOIR LES PLANS DE COUPE
DIRECCION DEL HILO, VEANSE PLANOS DE CORTE



5a

1

UPPER FRONT
 PIECE SUPERIEURE DEVANT
 DELANTERO SUPERIOR



SEAM ALLOWANCE INCLUDED
 AVEC VALEUR DE COUTURE
 CON MARGEN DE COSTURA

5/8" (1.5cm)

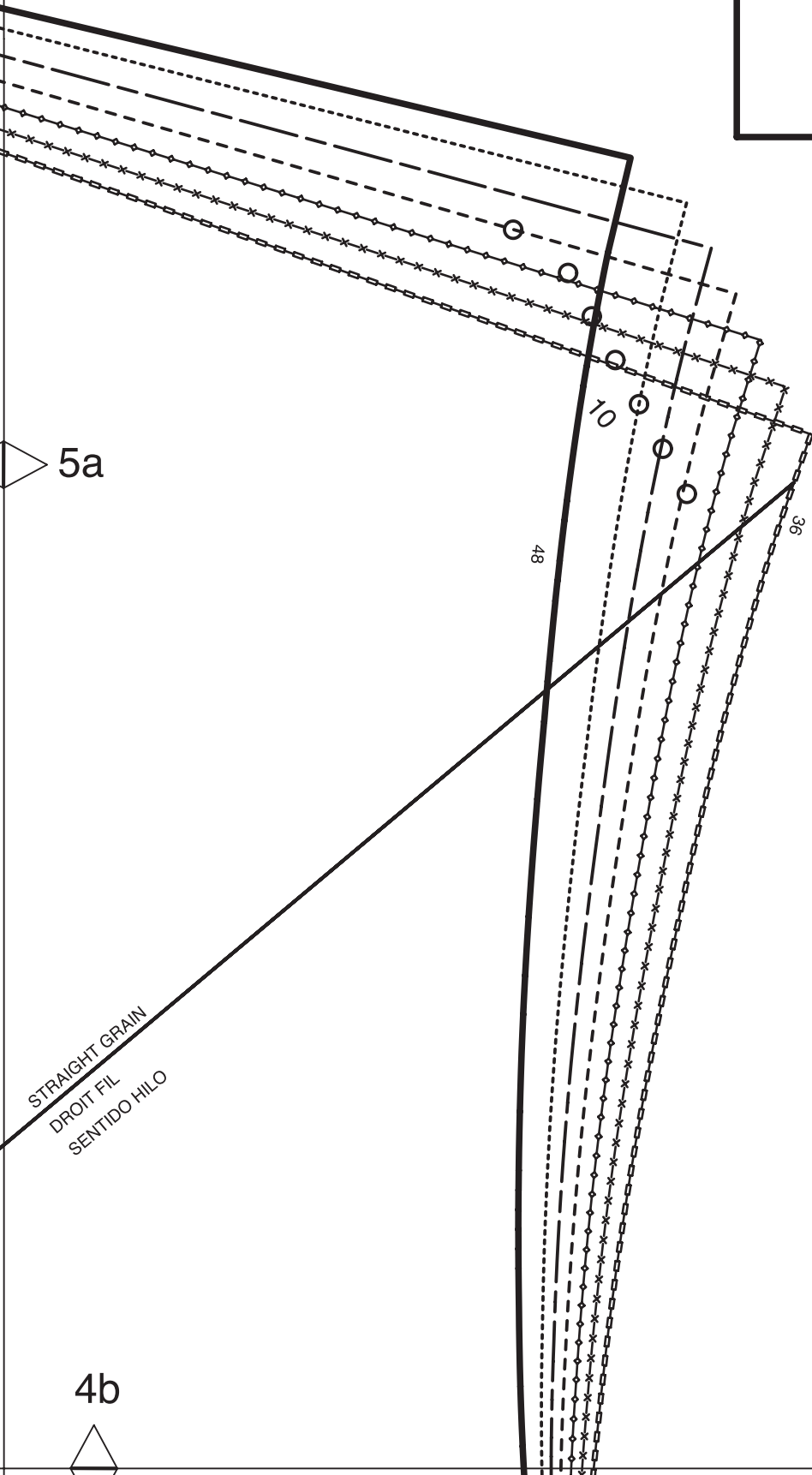
8132

Burda
STYLE

www.burdastyle.com

6.36

4a



5a

48

10

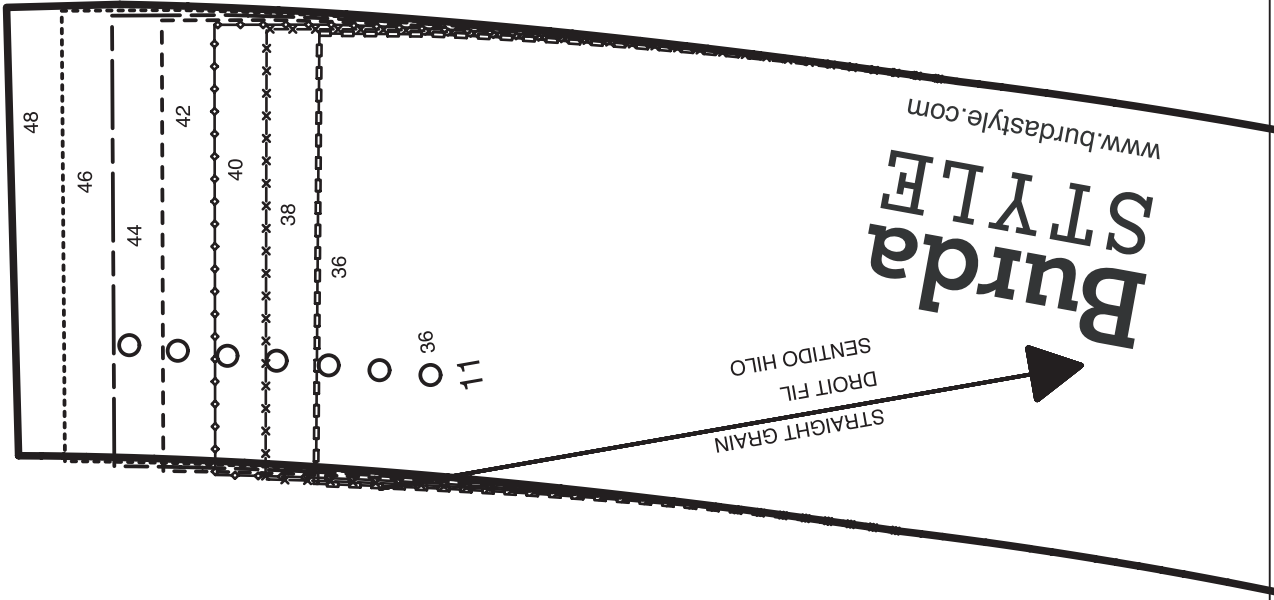
36

5b

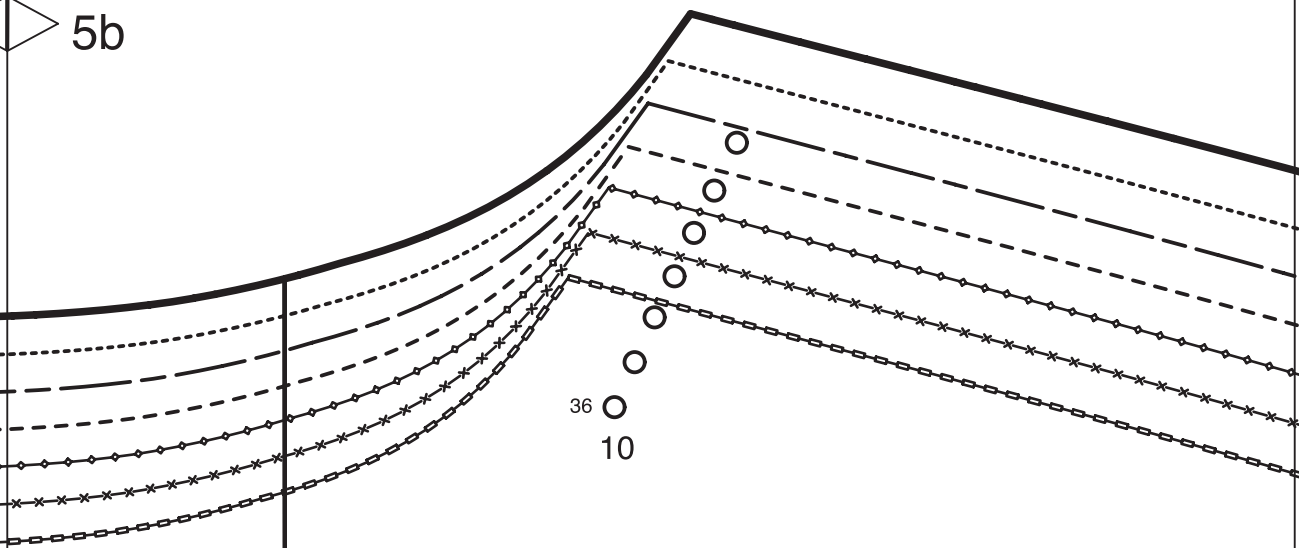
STRAIGHT GRAIN
DROIT FIL
SENTIDO HILO

4b





5b



4c

5c

8132

SEAM ALLOWANCE INCLUDED
AVEC VALEUR DE COUTURE
CON MARGEN DE COSTURA

(1,5cm)

5/8"

9
2 x 

5d 

8132
SEAM ALLOWANCE INCLUDED
AVEC VALEUR DE COUTURE
CON MARGEN DE COSTURA

(1,5cm)

5/8"

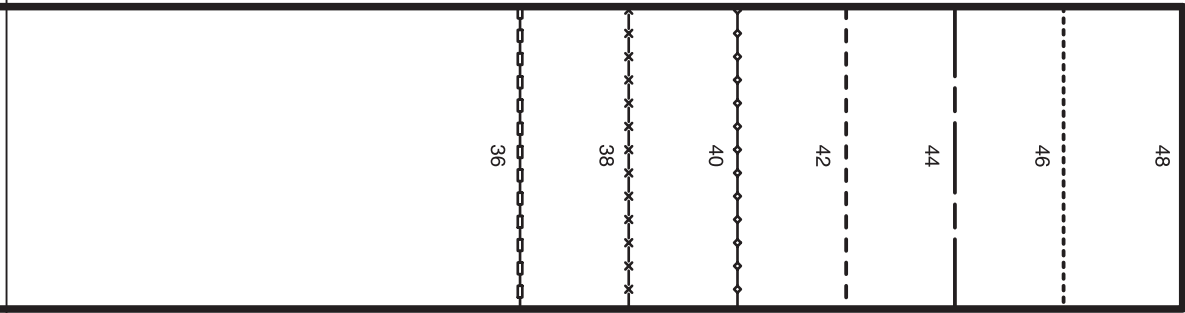
2 x 

FRONT FACING
PAREMENTURE DEVANT
VISTA ANTERIOR

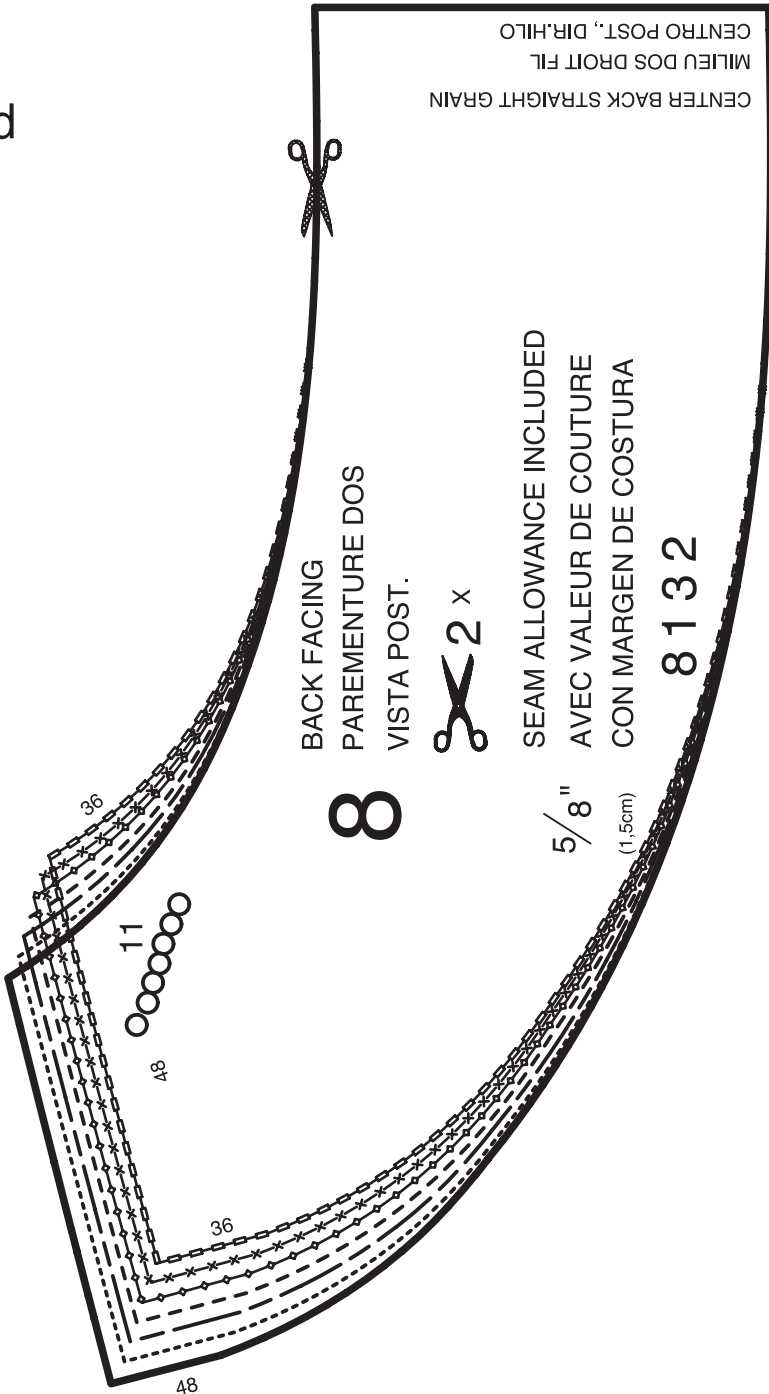


5c 

4d 



5d



BACK FACING
 PAREMENTURE DOS
 VISTA POST.



SEAM ALLOWANCE INCLUDED
 AVEC VALEUR DE COUTURE
 CON MARGEN DE COSTURA

8132

CENTER BACK STRAIGHT GRAIN
 MILIEU DOS DROIT FIL
 CENTRO POST., DIR.HILLO

4e

5e

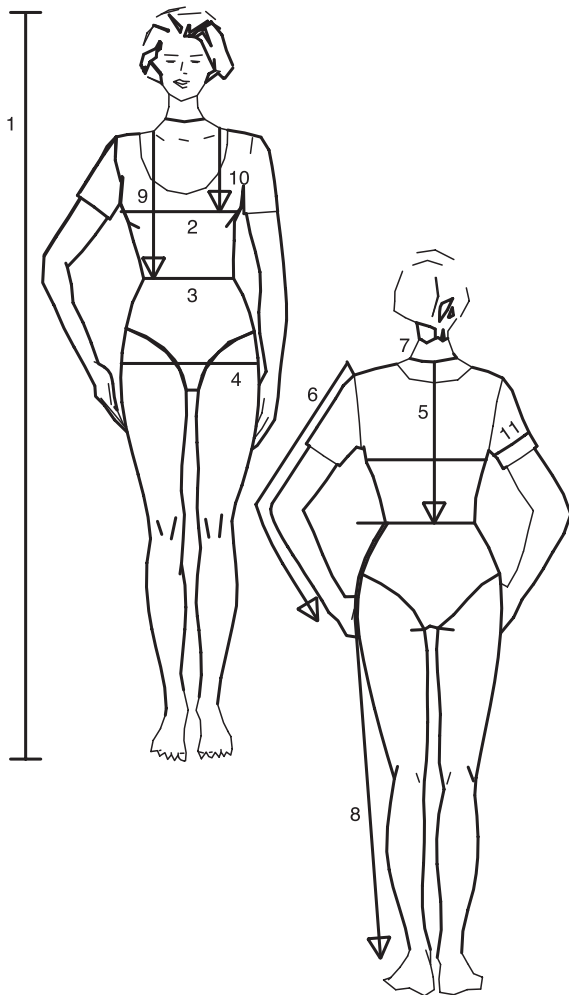
Burda STYLE

www.burdastyle.com

Size
Taille
Talla

32 34 36 38 40 42 44 46 48 50 52 54 56 58 60

1	inches	66 1/4	66 1/4	66 1/4	66 1/4	66 1/4	66 1/4	66 1/4	66 1/4	66 1/4	66 1/4	66 1/4	66 1/4	66 1/4	66 1/4	
	cm	168	168	168	168	168	168	168	168	168	168	168	168	168	168	
2	inches	30	31 1/2	33	34 3/4	36 1/4	37 3/4	39 1/2	41	43 1/2	45 1/2	48	50 1/2	52 3/4	55 1/4	57 1/2
	cm	76	80	84	88	92	96	100	104	110	116	122	128	134	140	146
3	inches	23	24 1/2	26	27 3/4	29 1/4	30 3/4	32 1/2	34	36 1/4	38 3/4	41	43 1/2	45 1/2	48	50 1/2
	cm	58	62	66	70	74	78	82	86	92	98	104	110	116	122	128
4	inches	32 1/2	34	35 1/2	37	38 3/4	40 1/4	41 3/4	43 1/2	45 1/2	48	50 1/2	52 3/4	55 1/4	57 1/2	60
	cm	82	86	90	94	98	102	106	110	116	122	128	134	140	146	152
5	inches	15 3/4	16	16 1/4	16 1/2	16 1/2	16 3/4	17	17 1/4	17 1/4	17 1/2	17 3/4	18	18 1/4	18 1/2	18 1/2
	cm	40	40,5	41	41,5	42	42,5	43	43,5	44	44,5	45	45,5	46	46,5	47
6	inches	23 1/4	23 1/4	23 1/4	23 3/4	23 3/4	24	24	24	24	24 1/2	24 1/2	24 1/2	24 3/4	24 3/4	24 3/4
	cm	59	59	59	60	60	61	61	61	61	62	62	62	63	63	63
7	inches	13	13 1/2	14 1/4	14 1/2	14 3/4	15	15 1/2	15 3/4	16 1/4	16 1/2	17	17 1/4	17 3/4	18 1/4	18 1/2
	cm	33	34	35	36	37	38	39	40	41	42	43	44	45	46	47
8	inches	39 3/4	40 1/4	40 1/4	40 3/4	41	41	41 1/2	41 1/2	41 1/2	41 3/4	41 3/4	41 3/4	42 1/4	42 1/2	42 1/2
	cm	101	102	102	103	104	104	105	105	105	106	106	106	107	108	108
9	inches	16 1/2	17	17 1/4	17 3/4	18 1/4	18 1/2	19	19 1/4	19 3/4	20 1/4	20 1/2	21	21 1/4	21 3/4	22 1/4
	cm	42	43	44	45	46	47	48	49	50	51	52	53	54	55	56
10	inches	9 1/2	9 7/8	10 1/4	10 3/4	11 1/8	11 1/2	11 7/8	12 1/4	12 3/4	13	13 1/2	14 1/4	14 1/2	14 3/4	15
	cm	24	25	26	27	28	29	30	31	32	33	34	35	36	37	38
11	inches	9 7/8	10 1/4	10 3/4	11 1/8	11 1/2	11 7/8	12 1/4	12 3/4	13 1/2	14 1/2	15	15 3/4	16 1/2	17 1/4	18 1/4
	cm	25	26	27	28	29	30	31	32	34	36	38	40	42	44	46



anglais

1. Height
2. Bust
3. Waist
4. Hip
5. Back length
6. Sleeve length
7. Neck width
8. Side leg length
9. Front waist length
10. Bust point
11. Upper arm circumf.

For dresses, blouses, coats and jackets select size according to bust measurement, for trousers and skirts according to hip measurement!
All burda patterns are prepared with ease allowance appropriate for style in question.

français

1. Stature
2. Tour de poitrine
3. Tour de taille
4. Tour des hanches
5. Long. du dos
6. Longueur de manche
7. Tour de cou
8. Long. côté pantalon
9. Long. taille devant
10. Profondeur de poitrine
11. Tour du bras

Robes, corsages, manteaux et vestes seront choisis d'après votre tour de poitrine les pantalons et les jupes d'après votre tour de hanches!
Tous les patrons sont établis avec l'aisance nécessaire selon le genre du modèle.

español

1. Estatura
2. Contorno busto
3. Contorno cintura
4. Contorno cadera
5. Largo espalda
6. Largo manga
7. Contorno cuello
8. Largo lateral del pantalón
9. Largo talle delantero
10. Altura de pecho
11. Cont. de brazo

La talla para los vestidos, blusas, abrigos y chaquetas, se determina de acuerdo con el contorno del busto. Los pantalones y las faldas, de acuerdo con el contorno de las caderas.
En el patrón-Burda se incluyen los márgenes para la holgura necesaria.