

## HEARTFELT GAITER/ HEARTLESS GAITER

by Nikol Lohr

Yes, you still have plenty of time to knit a heartfelt Valentine's Day gift! This bulky cabled gaiter is toasty warm, subtly be-hearted (or knit the heartless version), and knits up in a few hours. Experienced cable knitters will be able to whip it out in just over 2 hours; beginning cablers will probably spend closer to 4. Because you can combine multiple strands to achieve the super-bulky gauge, this is a great stash-busting project.

### MATERIALS

#### Yarn

- » **1 skein Blue Sky Alpaca Bulky** (50% alpaca/50% wool; 100g; 45 yd/41m), or about 50 yards of any yarn that knits at 2 stitches/inch in stockinette, or multiple strands to achieve gauge.
- » **Gray version:** Blue Sky Alpaca Bulky in Gray Wolf
- » **Red version:** 2 strands of Knit Picks Decadence (discontinued) + 2 strands Knit Picks Merino Style from partial skeins in my stash. If you're making up a super-bulky from multiple strands of lighter yarn, start with about 5 strands of dk/4 strands of worsted/3 strands of chunky and check the gauge, then add or subtract strands from there.

#### Needles

» US 15 16"-24" circular

#### Gauge

» 2 st = 1"

#### Size

» Adult

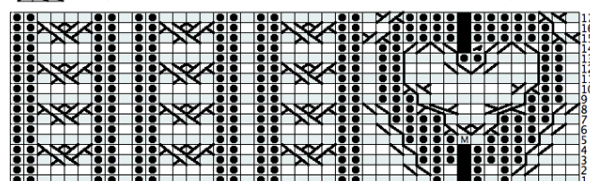
### Directions

1. Cast on 41 stitches for the *Heartfelt* version or 40 stitches for *Heartless* version. I like a cable cast-on because it allows you to get the most of your yarn, and this pattern will cut it close to keep to one skein.
2. Join the yarn, being careful not to twist stitches. Place the marker.
3. Work the version of your choice. *Heartfelt* is fully charted. *Heartless* repeats the pattern 4x. Note that *Heartfelt* increases 1 stitch (42 stitches total) at the point of the heart and decreases back to 41 stitches after the heart is complete. *Heartless* maintains a constant stitch count throughout.
4. Work all rows, then bind off in pattern (bind off purled stitches purlwise and knit stitches knitwise). Weave in the ends.



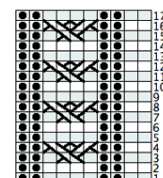
### HEARTFELT

- ☐ K (knit) ☒ P (purl) ☒ No stitch ☒ M1 (invisible increase) ☒ P2tog (purl 2 together)
- ☒ C2B-P (Slip 1 to cable needle and hold to back of work. K1 off left needle, then P1 off cable needle.)
- ☒ C2F-P (Slip 1 to cable needle and hold to front of work. P1 off left needle, then K1 off cable needle.)
- ☒ C2B (Slip 1 to cable needle and hold to back of work. K1 off left needle, then K1 off cable needle.)
- ☒ C2F (Slip 1 to cable needle and hold to front of work. K1 off left needle, then K1 off cable needle.)
- ☒ C3B (Slip 2 to cable needle and hold to back of work. K1 off left needle, then K2 off cable needle.)
- ☒ C3F (Slip 1 to cable needle and hold to front of work. K2 off left needle, then K1 off cable needle.)



### HEARTLESS

- ☐ K (knit) ☒ P (purl)
- ☒ C2B (Slip 1 to cable needle and hold to back of work. K1 off left needle, then K1 off cable needle.)
- ☒ C2F (Slip 1 to cable needle and hold to front of work. K1 off left needle, then K1 off cable needle.)



Thanks to Jacquie for the splendid chart maker!  
[jacquie.typepad.com/Charts/knitChart.htm](http://jacquie.typepad.com/Charts/knitChart.htm)