



FREDDIE the mouse

Freddie spends his days in the garage polishing his car dreaming of the open road. One day he'll take it for a drive but he needs to get his licence first.

You will need...



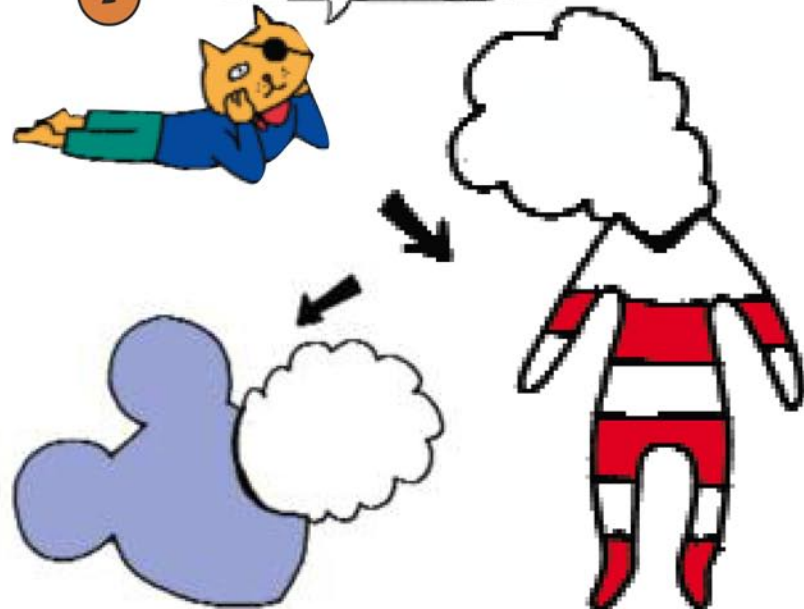
1

Using the templates on page xx, cut out two bodies from the stripy tee shirt and two heads from the grey sweater. With a 1/4in (6mm) seam allowance, machine stitch the matching pieces together, leaving a small opening in each piece.



2

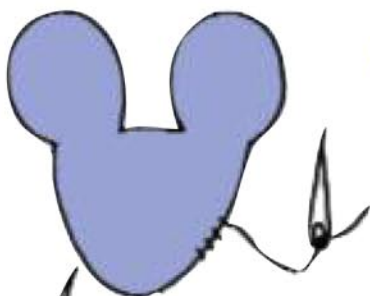
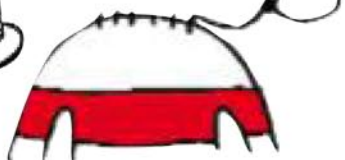
Turn the body right side out and fill with wadding by pushing small amounts through the opening until it is nicely shaped. Use a stick or pencil to help push the wadding into the arms and legs. Do the same with the head.



Use an overhand stitch to sew up the openings in the body and head.

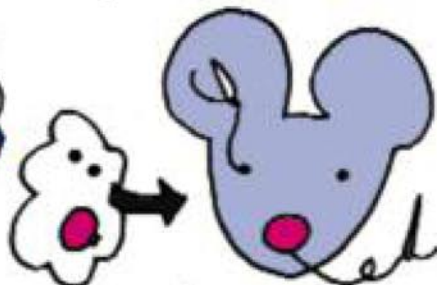


3



4

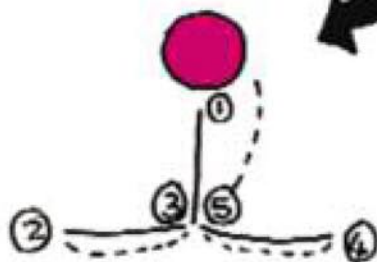
Now it's time to stitch on the face. Using the diagram as a guide, stitch on the beads for eyes and the larger button for the nose. Then following the instructions in the diagram, make three straight stitches for the mouth, using the heavy-duty thread.



Overhand stitch the head and body together.

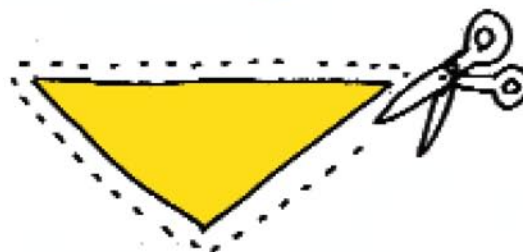


5



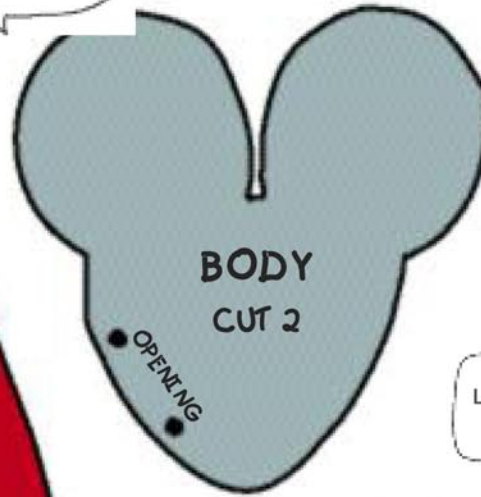
Cut out a triangular piece of yellow fabric and tie around Freddie's neck for his scarf. Now he's ready to go cruising... once he's past his test!

6



FREDDIE'S templates

A 1/4in seam allowance is used on both templates.



Look at me go!



NOTE:
ENLARGE BODY AND HEAD BY
200% ON A PHOTOCOPIER
FOR CORRECT SIZE

