

CRAFT ACTIVISM

PEOPLE, IDEAS, AND PROJECTS
FROM THE NEW COMMUNITY OF HANDMADE
AND HOW YOU CAN JOIN IN

JOAN TAPPER **PHOTOGRAPHY BY GALE ZUCKER**

FOREWORD BY FAYTHE LEVINE, DIRECTOR OF HANDMADE NATION





ON THE QUAD SCARF

DESIGNED BY Rebecca Hatcher

SKILL LEVEL Easy

When Rebecca Hatcher designed On the Quad, she knew she had to match all the requirements for the OFA's Red Scarf project: a scarf that looks good on both genders, suits a success-bound college student, is between 5" and 8" (12.5–20.5cm) wide, approximately 60" (152.5cm) long, *and* can fold up to fit into a flat mailing box. She created a reversible, worsted-weight pattern with a dynamic grid of rectangles and lines. The unusual three slipped stitches on the edges resemble i-cord piping.



SIZE

One size, 8 ½" x 60" (21.5cm x 152.5cm)

MATERIALS

2 skeins Berroco Ultra Alpaca yarn, 50% Super Fine Alpaca, 50% Peruvian Wool, 3½ oz (400g), 215 yd (197m) in Chianti



TOOLS

Size U.S. 8 (5mm) needles, or size to obtain gauge

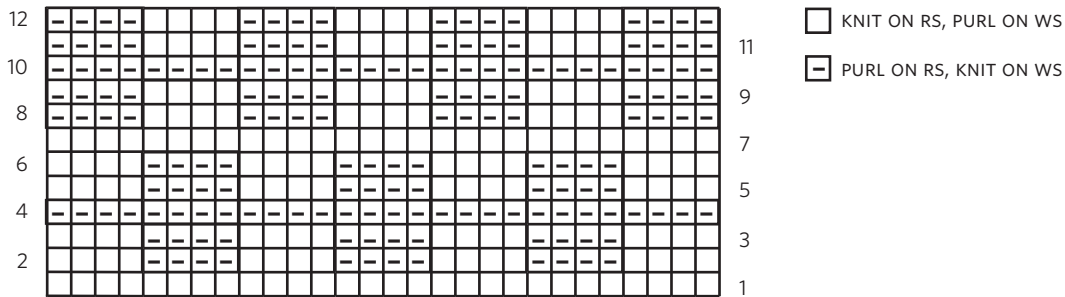
GAUGE

16 stitches and 28 rows = 4" (10cm) in box pattern, after blocking. Gauge is not crucial.

STITCH GUIDE

Slip 3 wyif (slip 3 stitches with yarn in front):
[Insert the right needle into the stitch purlwise and transfer the stitch from the left needle to the right needle without working it] 3 times. Bring the yarn in front of the 3 stitches and proceed with the next stitch.

BOX PATTERN



NOTE: All rows should be started with slip 3 wyif, then proceed to work the chart. After finishing the chart for each row, k3. This applies to both RS and WS. These stitches form a narrow, lengthwise border on either side of the box pattern.

BOX PATTERN

ROW 1 (RS): Knit

ROW 2 (WS): *P4, k4; repeat from* twice, p4.

ROW 3: *K4, p4; repeat from* twice, k4.

ROW 4: Knit.

ROW 5: *K4, p4; repeat from* twice, k4.

ROW 6: *P4, k4; repeat from* twice, p4.

ROW 7: Knit.

ROW 8: *K4, p4; repeat from* twice, k4.

ROW 9: *P4, k4; repeat from* twice, p4.

ROW 10: Knit.

ROW 11: *P4, K4; repeat from* twice, p4.

ROW 12: *K4, p4; repeat from* twice, k4.

Repeat rows 1-12 for pattern

SCARF

Cast on 34 stitches.

RIB BORDER

ROW 1 (WS): Slip 3 wyif *k4, p4; repeat from* twice, k7.

ROW 2 (RS): Slip 3 wyif, *p4, k4; repeat from* twice, p4, k3.

Repeat these 2 rows until the work measures 3" (7.5cm) from the cast-on end, ending with a WS row.

SET-UP ROW (RS): Slip 3 wyif, work in box pattern to the last 3 stitches, k3.

Work in box pattern, slipping 3 stitches at the beginning of each row as established, until scarf measures 57" (145cm) or 3" (7.5cm) less than desired length, ending after row 1.

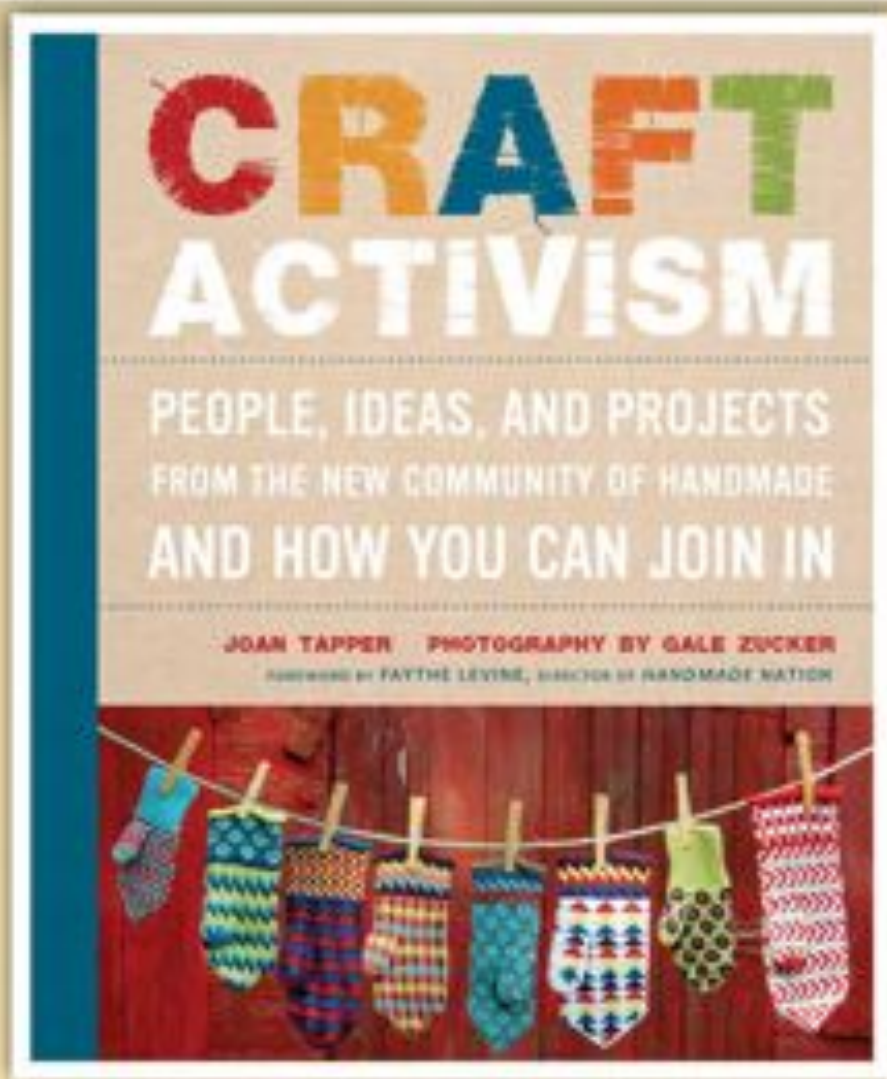
Work 2 rows of rib border for 3" (7.5cm).

FINISHING

Bind off all stitches and weave in ends. Gently block scarf until squared.

Purchase a copy of
CRAFT ACTIVISM

at one of these retailers:



amazon.com

BARNES & NOBLE
BOOKSELLERS

Google
books

iBookstore

INDIEBOUND



POTTER CRAFT