

Layer Cake Key Chain Plush

♥ **Difficulty: Easy**

This cake-shaped plush has several pieces and is a bit more complicated than the previous two projects. However, all the different pieces make customizing your cake to any color combination very easy. Fleece or felt are good fabrics to choose for this project, though fleece gets my highest recommendation. Matching corners and edges is the challenge—if you find your edges don't match up by a few millimeters, don't hesitate to stretch your fleece a little bit to make them match. Fleece is very accommodating this way, and if you stretch it only a little, you won't notice any mistakes when your cake is done!

Materials

- 6" x 7" (150 x 180mm) square of main cake color fleece or felt
- 9" x 9" (230 x 230mm) square of frosting color fleece or felt
- Ribbon to match main cake color
- Fabric for appliqué
- Thread to match main cake color
- Thread to match frosting color
- Thread to match appliqué fabric
- Batting
- Fusible web
- Stabilizer

Tools

- Fabric scissors
- Fabric pins
- Fabric marker
- Hand-sewing needle
- Key chain or strap

Patterns on page 144.



This top view shows the rosette and ruffle details.





Layer Cake Keychain Plush



1

Sew the layers. Cut the pattern pieces from your fabric and make all applicable markings. Apply fusible web to the appliqué pieces. Sew a cake layer to each long side of a frosting layer. You should have a frosting layer between two cake layers. Repeat this process for the other side, and finger-press the seams when finished.



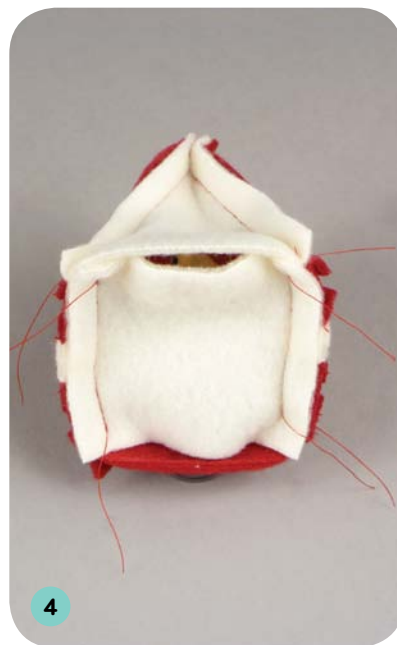
2

Appliqué. Iron the appliqué fabric to the cake's side. Sew the appliqué fabric down along the edges, and sew a line where indicated by the pattern for the mouth.



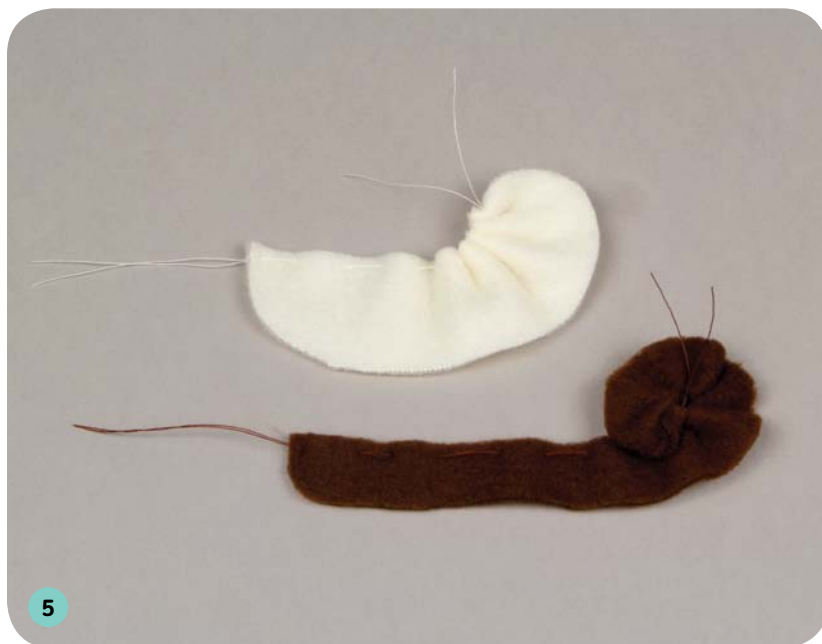
3

Sew the top and bottom. Sew one cake side along the long edge of the top piece, and another cake side to the other edge, meeting together at the point. Repeat this for the bottom piece.



4

Sew the front and back. Sew the cake side edges to the back, leaving the top and bottom open. Also sew the cake sides together at the point of the cake, where they met in Step 3.



Gather the ruffles. Hand-sew a gathering stitch along the bottom of the ruffle and rosette pieces. Gather the ruffle piece small enough to fit inside the top edge of the cake that you left open in Step 4. Set the rosette aside for later.



Sew the ruffle. Cut a 1" (25mm) piece of ribbon, fold it in half, and insert it into the top edge of the cake, centered beneath the ruffle, facing the back of the cake. Sew in place.



Turn and stuff. Turn the cake inside out and stuff it firmly with batting. Using the ladder stitch, hand-sew the bottom of the cake closed.



Attach rosette. Curl the rosette piece into a flower shape and hand-sew it to the top of the cake. Attach a key ring or lanyard to the ribbon to finish.