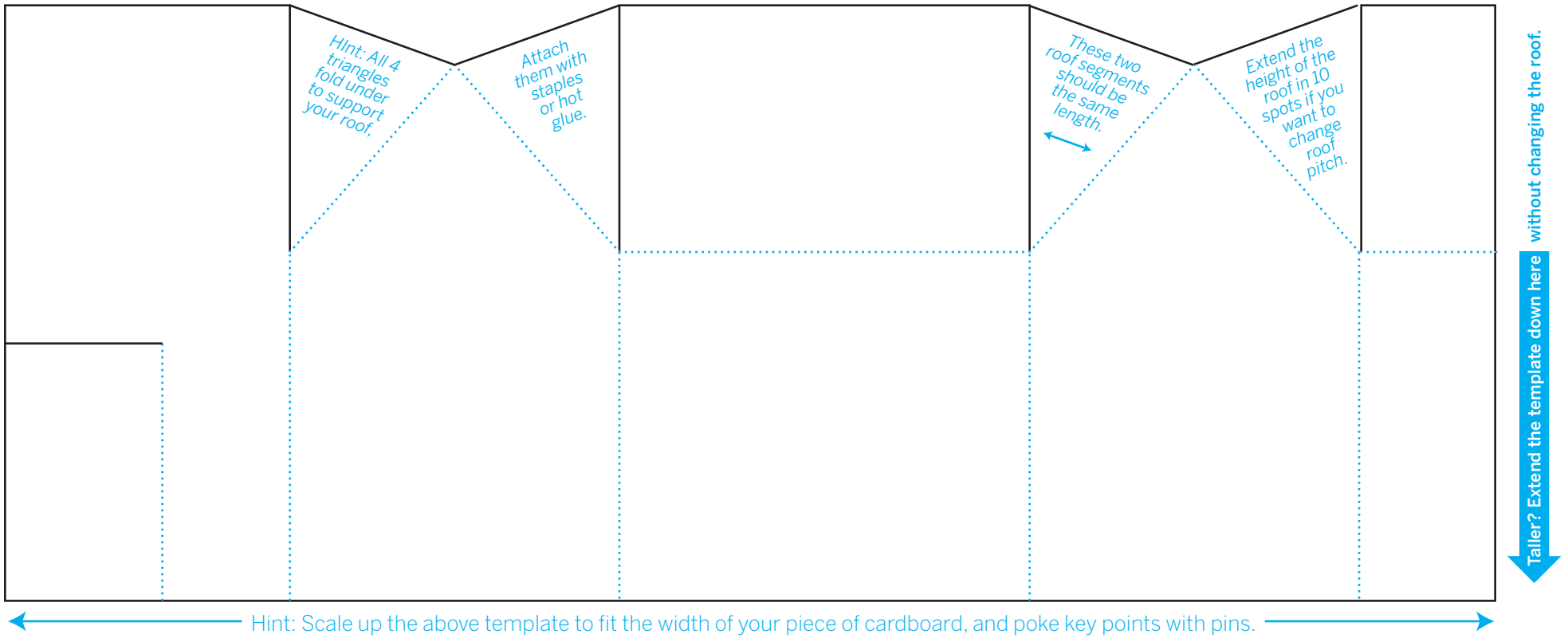


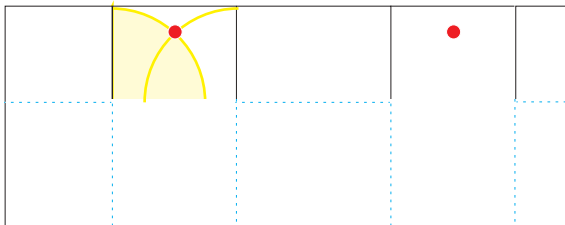
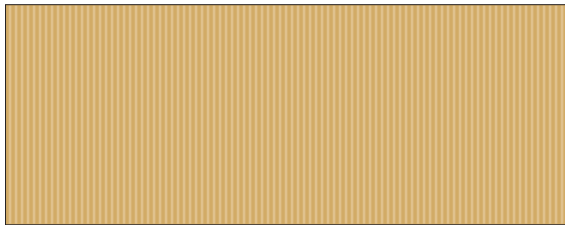
Make: Gingerbread House template

- Cut your corrugated cardboard all the way through it on the solid black lines.
- Score your cardboard by cutting halfway deep into it on the dotted blue lines.

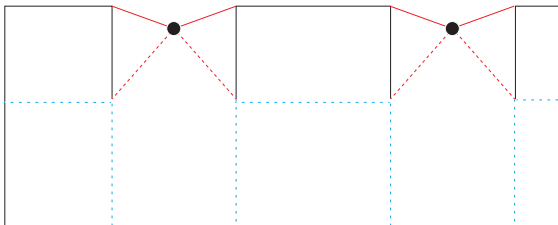
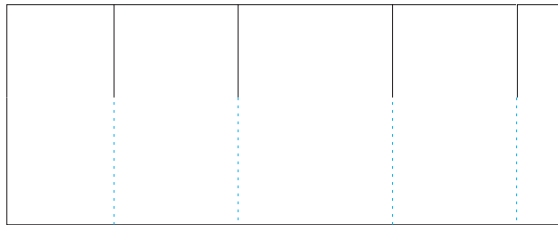


Hint: Scale up the above template to fit the width of your piece of cardboard, and poke key points with pins.

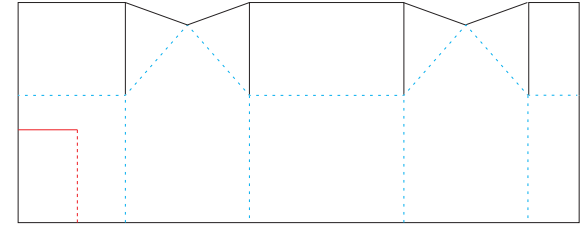
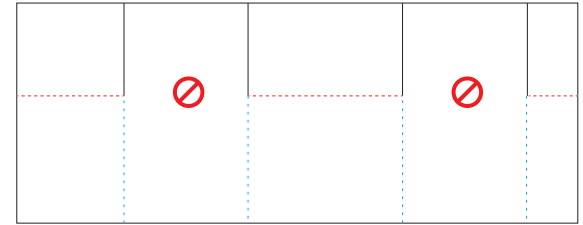
- 1 Cut cardboard 2.5x wider than it is tall, with the ridges running parallel to the sides.



- 2 Cut & score vertical lines with a metal-edged ruler. Slice all the way through only for the top!



- 3 Score the front and rear roof lines. (Skip the house's sides. You'll score them next.)



- 4 Identify the peak of the roof (a compass helps: it's where the front & back roofs would meet)

- 5 Score the side roof lines, and cut off the top triangle from each side of the house.

- 6 For your door to open inwardly, score its hinge on the other side. Add windows? Assemble & decorate!